

Datasheet for ABIN1533251

anti-Cyclin G1 antibody (AA 161-210)**2** Images[Go to Product page](#)

Overview

Quantity:	100 µg
Target:	Cyclin G1 (CCNG1)
Binding Specificity:	AA 161-210
Reactivity:	Human, Mouse, Rat
Host:	Rabbit
Clonality:	Polyclonal
Conjugate:	This Cyclin G1 antibody is un-conjugated
Application:	Western Blotting (WB), Immunohistochemistry (IHC), ELISA

Product Details

Immunogen:	The antiserum was produced against synthesized peptide derived from human Cyclin G.
Isotype:	IgG
Specificity:	Cyclin G Antibody detects endogenous levels of total Cyclin G protein.
Purification:	The antibody was purified from rabbit antiserum by affinity-chromatography using immunogen.
Purity:	> 95 %

Target Details

Target:	Cyclin G1 (CCNG1)
Alternative Name:	Cyclin G (CCNG1 Products)
Background:	Synonyms: Cyclin-G1, Cyclin-G

Target Details

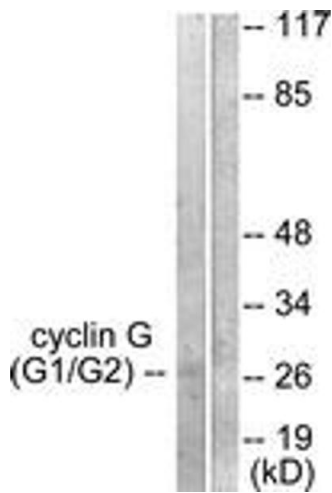
	NCBI Gene Symbol: CCNG1
Molecular Weight:	34 kDa
Gene ID:	900
OMIM:	601578
UniProt:	P51959
Pathways:	p53 Signaling

Application Details

Application Notes:	WB: 1:500~1:1000 IHC: 1:50~1:100 ELISA: 1:40000
Comment:	Unigene-Number: Hs.79101 (NCBI Gene Symbol: CCNG1)
Restrictions:	For Research Use only

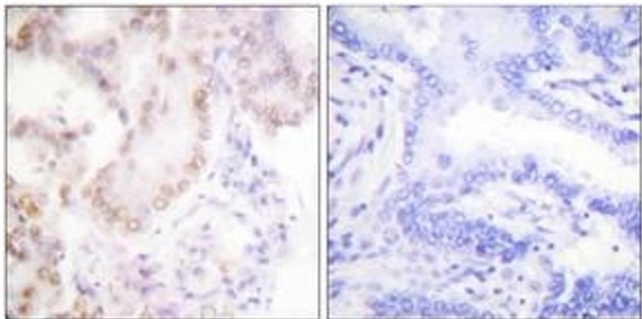
Handling

Format:	Liquid
Concentration:	1 mg/mL
Buffer:	phosphate buffered saline (without Mg ²⁺ and Ca ²⁺), pH 7.4, 150 mM NaCl, 0.02 % sodium azide and 50 % glycerol.
Preservative:	Sodium azide
Precaution of Use:	This product contains sodium azide: a POISONOUS AND HAZARDOUS SUBSTANCE which should be handled by trained staff only.
Storage:	-20 °C
Storage Comment:	Stable at -20°C for at least 1 year.
Expiry Date:	12 months



Western Blotting

Image 1. Western blot analysis of extracts from Jurkat cells, using Cyclin G Antibody. The lane on the right is treated with the synthesized peptide.



Immunohistochemistry

Image 2. Immunohistochemistry analysis of paraffin-embedded human lung carcinoma tissue, using Cyclin G Antibody. The picture on the right is treated with the synthesized peptide.