

Datasheet for ABIN1533253
anti-Desmin antibody (AA 421-470)



[Go to Product page](#)

2 Images

1 Publication

Overview

Quantity:	100 µL
Target:	Desmin (DES)
Binding Specificity:	AA 421-470
Reactivity:	Human, Mouse, Rat
Host:	Rabbit
Clonality:	Polyclonal
Conjugate:	This Desmin antibody is un-conjugated
Application:	Western Blotting (WB), Immunohistochemistry (IHC), ELISA

Product Details

Immunogen:	The antiserum was produced against synthesized peptide derived from human Desmin.
Isotype:	IgG
Specificity:	Desmin Antibody detects endogenous levels of total Desmin protein.
Purification:	The antibody was purified from rabbit antiserum by affinity-chromatography using immunogen.
Purity:	> 95 %

Target Details

Target:	Desmin (DES)
Alternative Name:	Desmin (DES Products)
Background:	Synonyms: CMD1I, CSM1, CSM2, FLJ12025, FLJ39719, FLJ41013, FLJ41793, intermediate

Target Details

	filament protein
	NCBI Gene Symbol: DES
Molecular Weight:	53 kDa
Gene ID:	1674
OMIM:	125660
UniProt:	P17661

Application Details

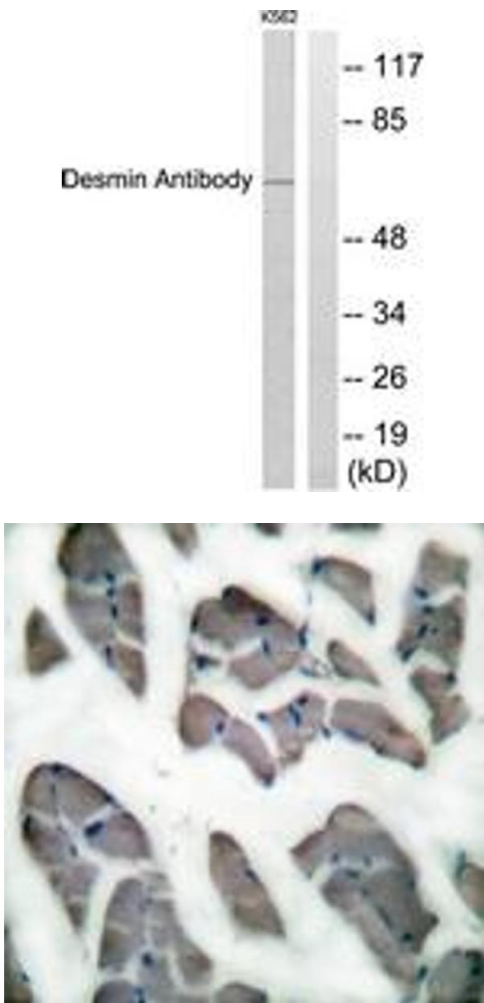
Application Notes:	WB: 1:500~1:1000 IHC: 1:50~1:100 ELISA: 1:10000
Comment:	Unigene-Number: Hs.594952 (NCBI Gene Symbol: DES)
Restrictions:	For Research Use only

Handling

Format:	Liquid
Concentration:	1 mg/mL
Buffer:	phosphate buffered saline (without Mg ²⁺ and Ca ²⁺), pH 7.4, 150 mM NaCl, 0.02 % sodium azide and 50 % glycerol.
Preservative:	Sodium azide
Precaution of Use:	This product contains sodium azide: a POISONOUS AND HAZARDOUS SUBSTANCE which should be handled by trained staff only.
Storage:	-20 °C
Storage Comment:	Stable at -20°C for at least 1 year.
Expiry Date:	12 months

Publications

Product cited in:	Yu, Zeidel, Hill: "Cellular expression profile for interstitial cells of cajal in bladder - a cell often misidentified as myocyte or myofibroblast." in: PLoS ONE , Vol. 7, Issue 11, pp. e48897, (2012) (PubMed).
-------------------	---



Western Blotting

Image 1. Western blot analysis of extracts from K562 cells, using Desmin Antibody. The lane on the right is treated with the synthesized peptide.

Immunohistochemistry

Image 2. Immunohistochemistry analysis of paraffin-embedded human skeletal muscle tissue, using Desmin Antibody. The picture on the right is treated with the synthesized peptide.