

Datasheet for ABIN1533254
anti-PARK7/DJ1 antibody (AA 21-70)



[Go to Product page](#)

3 Images

Overview

Quantity:	100 µL
Target:	PARK7/DJ1 (PARK7)
Binding Specificity:	AA 21-70
Reactivity:	Human, Mouse
Host:	Rabbit
Clonality:	Polyclonal
Conjugate:	This PARK7/DJ1 antibody is un-conjugated
Application:	Western Blotting (WB), Immunohistochemistry (IHC), ELISA, Immunofluorescence (IF)

Product Details

Immunogen:	The antiserum was produced against synthesized peptide derived from human DJ-1.
Isotype:	IgG
Specificity:	DJ-1 Antibody detects endogenous levels of total DJ-1 protein.
Purification:	The antibody was purified from rabbit antiserum by affinity-chromatography using immunogen.
Purity:	> 95 %

Target Details

Target:	PARK7/DJ1 (PARK7)
Alternative Name:	DJ-1 (PARK7 Products)
Background:	Synonyms: Protein DJ-1, Oncogene DJ1, Parkinson disease protein 7, PARK7

Target Details

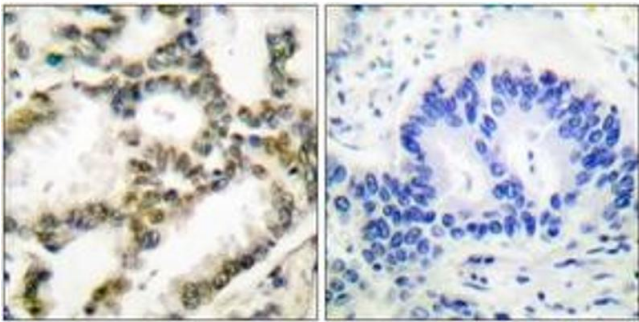
	NCBI Gene Symbol: PARK7
Molecular Weight:	19 kDa
Gene ID:	11315
OMIM:	602533
UniProt:	Q99497
Pathways:	Intracellular Steroid Hormone Receptor Signaling Pathway , Regulation of Intracellular Steroid Hormone Receptor Signaling , Proton Transport

Application Details

Application Notes:	WB: 1:500~1:1000 IHC: 1:50~1:100 IF: 1:100~1:500 ELISA: 1:10000
Comment:	Unigene-Number: Hs.419640 (NCBI Gene Symbol: PARK7)
Restrictions:	For Research Use only

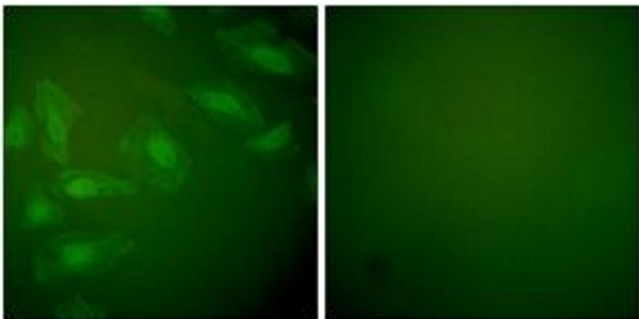
Handling

Format:	Liquid
Concentration:	1 mg/mL
Buffer:	phosphate buffered saline (without Mg ²⁺ and Ca ²⁺), pH 7.4, 150 mM NaCl, 0.02 % sodium azide and 50 % glycerol.
Preservative:	Sodium azide
Precaution of Use:	This product contains sodium azide: a POISONOUS AND HAZARDOUS SUBSTANCE which should be handled by trained staff only.
Storage:	-20 °C
Storage Comment:	Stable at -20°C for at least 1 year.
Expiry Date:	12 months



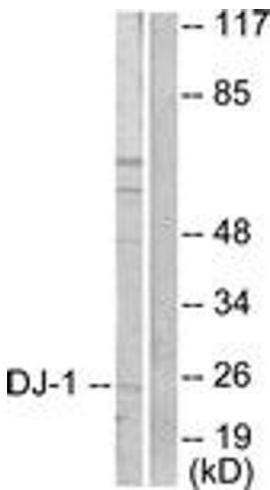
Immunohistochemistry

Image 1. Immunohistochemistry analysis of paraffin-embedded human lung carcinoma tissue, using DJ-1 Antibody. The picture on the right is treated with the synthesized peptide.



Immunofluorescence

Image 2. Immunofluorescence analysis of HeLa cells, using DJ-1 Antibody. The picture on the right is treated with the synthesized peptide.



Western Blotting

Image 3. Western blot analysis of extracts from HuvEc cells, using DJ-1 Antibody. The lane on the right is treated with the synthesized peptide.