



[Go to Product page](#)

Datasheet for ABIN1533255
anti-POLB antibody (AA 286-335)

2 Images

Overview

Quantity:	100 µg
Target:	POLB
Binding Specificity:	AA 286-335
Reactivity:	Human, Mouse, Rat
Host:	Rabbit
Clonality:	Polyclonal
Conjugate:	This POLB antibody is un-conjugated
Application:	Western Blotting (WB), Immunohistochemistry (IHC), ELISA

Product Details

Immunogen:	The antiserum was produced against synthesized peptide derived from human DNA Polymerase beta.
Isotype:	IgG
Specificity:	DNA Polymerase beta Antibody detects endogenous levels of total DNA Polymerase beta protein.
Purification:	The antibody was purified from rabbit antiserum by affinity-chromatography using immunogen.
Purity:	> 95 %

Target Details

Target:	POLB
---------	------

Target Details

Alternative Name: DNA Polymerase beta ([POLB Products](#))

Background: Synonyms: DNA polymerase beta, POLB
NCBI Gene Symbol: POLB

Molecular Weight: 38 kDa

Gene ID: 5423

OMIM: 174760

UniProt: [P06746](#)

Pathways: [DNA Damage Repair](#)

Application Details

Application Notes: WB: 1:500~1:1000 IHC: 1:50~1:100 ELISA: 1:10000

Comment: Unigene-Number: Hs.654484 (NCBI Gene Symbol: POLB)

Restrictions: For Research Use only

Handling

Format: Liquid

Concentration: 1 mg/mL

Buffer: phosphate buffered saline (without Mg²⁺ and Ca²⁺), pH 7.4, 150 mM NaCl, 0.02 % sodium azide and 50 % glycerol.

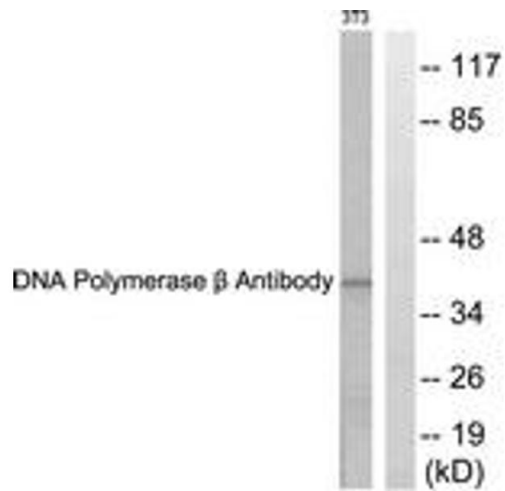
Preservative: Sodium azide

Precaution of Use: This product contains sodium azide: a POISONOUS AND HAZARDOUS SUBSTANCE which should be handled by trained staff only.

Storage: -20 °C

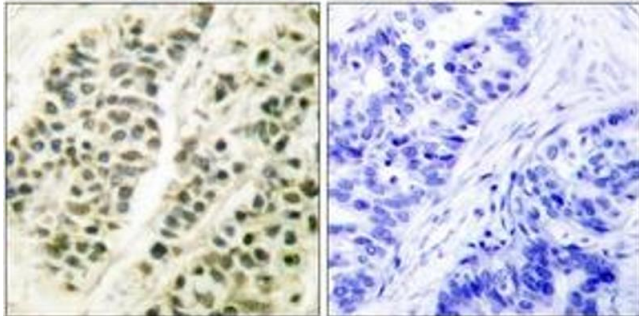
Storage Comment: Stable at -20°C for at least 1 year.

Expiry Date: 12 months



Western Blotting

Image 1. Western blot analysis of extracts from NIH-3T3 cells, using DNA Polymerase beta Antibody. The lane on the right is treated with the synthesized peptide.



Immunohistochemistry

Image 2. Immunohistochemistry analysis of paraffin-embedded human breast carcinoma tissue, using DNA Polymerase beta Antibody. The picture on the right is treated with the synthesized peptide.