

Datasheet for ABIN1533256
anti-PRKDC antibody (AA 4061-4110)



[Go to Product page](#)

3 Images

Overview

Quantity:	100 µL
Target:	PRKDC
Binding Specificity:	AA 4061-4110
Reactivity:	Human, Mouse
Host:	Rabbit
Clonality:	Polyclonal
Conjugate:	This PRKDC antibody is un-conjugated
Application:	ELISA, Western Blotting (WB), Immunohistochemistry (IHC), Immunofluorescence (IF)

Product Details

Immunogen:	The antiserum was produced against synthesized peptide derived from human DNA-PK.
Isotype:	IgG
Specificity:	DNA-PK Antibody detects endogenous levels of total DNA-PK protein.
Purification:	The antibody was purified from rabbit antiserum by affinity-chromatography using immunogen.
Purity:	> 95 %

Target Details

Target:	PRKDC
Alternative Name:	DNA-PK (PRKDC Products)
Background:	Synonyms: DNA- PKcs, DNA-dependent protein kinase catalytic subunit, DNPK1, P460, PRKD,

Target Details

PRKDC, XRCC7, kinase DNA-PK

NCBI Gene Symbol: PRKDC

Molecular Weight: 469 kDa

Gene ID: 5591

OMIM: 600899

UniProt: [P78527](#)

Pathways: [DNA Damage Repair, Production of Molecular Mediator of Immune Response](#)

Application Details

Application Notes: WB: 1:500~1:1000 IHC: 1:50~1:100 IF: 1:100~1:500 ELISA: 1:20000

Comment: Unigene-Number: Hs.491682 (NCBI Gene Symbol: PRKDC)

Restrictions: For Research Use only

Handling

Format: Liquid

Concentration: 1 mg/mL

Buffer: phosphate buffered saline (without Mg²⁺ and Ca²⁺), pH 7.4, 150 mM NaCl, 0.02 % sodium azide and 50 % glycerol.

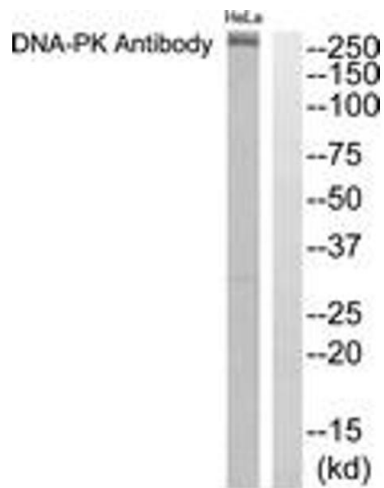
Preservative: Sodium azide

Precaution of Use: This product contains sodium azide: a POISONOUS AND HAZARDOUS SUBSTANCE which should be handled by trained staff only.

Storage: -20 °C

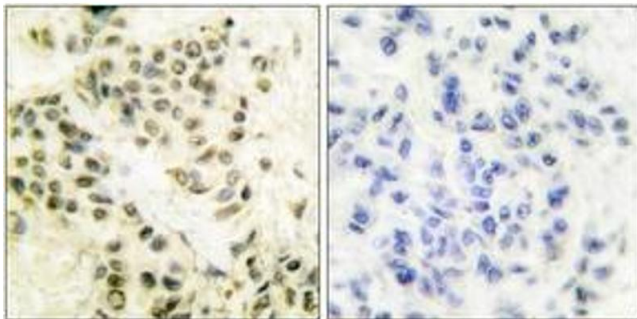
Storage Comment: Stable at -20°C for at least 1 year.

Expiry Date: 12 months



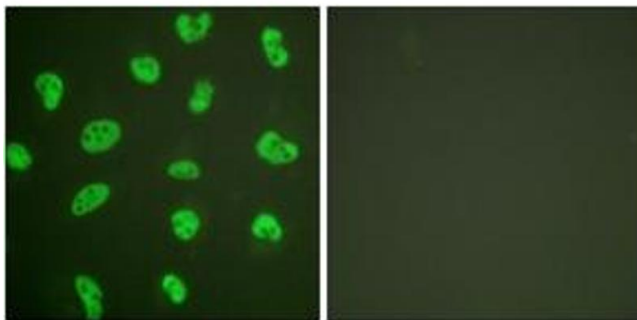
Western Blotting

Image 1. Western blot analysis of extracts from HeLa cells, using DNA-PK Antibody. The lane on the right is treated with the synthesized peptide.



Immunohistochemistry

Image 2. Immunohistochemistry analysis of paraffin-embedded human breast carcinoma tissue, using DNA-PK Antibody. The picture on the right is treated with the synthesized peptide.



Immunofluorescence

Image 3. Immunofluorescence analysis of HeLa cells, using DNA-PK Antibody. The picture on the right is treated with the synthesized peptide.