

Datasheet for ABIN1533257
anti-TGM4 antibody (AA 361-410)

3 Images

[Go to Product page](#)

Overview

Quantity:	100 µg
Target:	TGM4
Binding Specificity:	AA 361-410
Reactivity:	Human
Host:	Rabbit
Clonality:	Polyclonal
Conjugate:	This TGM4 antibody is un-conjugated
Application:	ELISA, Western Blotting (WB), Immunohistochemistry (IHC), Immunofluorescence (IF)

Product Details

Immunogen:	The antiserum was produced against synthesized peptide derived from human DP-1.
Isotype:	IgG
Specificity:	DP-1 Antibody detects endogenous levels of total DP-1 protein.
Purification:	The antibody was purified from rabbit antiserum by affinity-chromatography using immunogen.
Purity:	> 95 %

Target Details

Target:	TGM4
Alternative Name:	DP-1 (TGM4 Products)
Background:	Synonyms: E2F DIMERIZATION PARTNER 1, TRANSCRIPTION FACTOR DP1, TRANSCRIPTION

Target Details

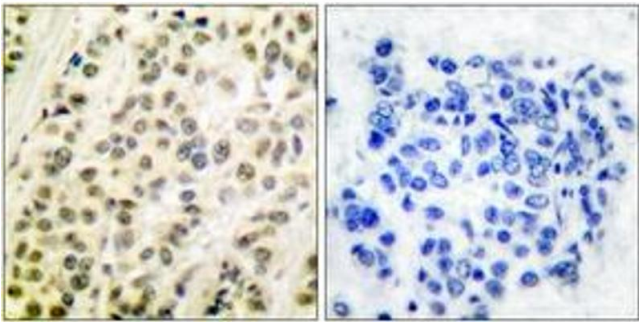
	FACTOR, SEQUENCE-SPECIFIC, DRTF1, transcription factor Dp-1 NCBI Gene Symbol: TFDP1
Molecular Weight:	45 kDa
Gene ID:	7027
OMIM:	189902
UniProt:	Q14186

Application Details

Application Notes:	WB: 1:500~1:1000 IHC: 1:50~1:100 IF: 1:100~1:500 ELISA: 1:5000
Comment:	Unigene-Number: Hs.79353 (NCBI Gene Symbol: TFDP1)
Restrictions:	For Research Use only

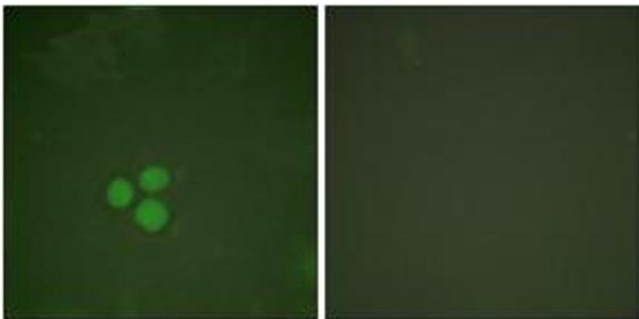
Handling

Format:	Liquid
Concentration:	1 mg/mL
Buffer:	phosphate buffered saline (without Mg ²⁺ and Ca ²⁺), pH 7.4, 150 mM NaCl, 0.02 % sodium azide and 50 % glycerol.
Preservative:	Sodium azide
Precaution of Use:	This product contains sodium azide: a POISONOUS AND HAZARDOUS SUBSTANCE which should be handled by trained staff only.
Storage:	-20 °C
Storage Comment:	Stable at -20°C for at least 1 year.
Expiry Date:	12 months



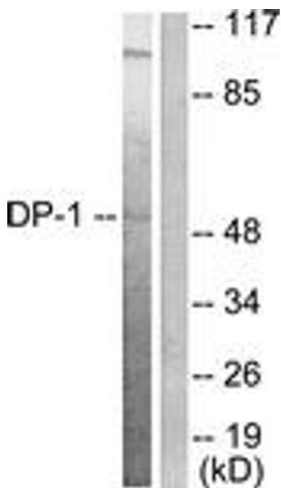
Immunohistochemistry

Image 1. Immunohistochemistry analysis of paraffin-embedded human breast carcinoma tissue, using DP-1 Antibody. The picture on the right is treated with the synthesized peptide.



Immunofluorescence

Image 2. Immunofluorescence analysis of HeLa cells, using DP-1 Antibody. The picture on the right is treated with the synthesized peptide.



Western Blotting

Image 3. Western blot analysis of extracts from HeLa cells, using DP-1 Antibody. The lane on the right is treated with the synthesized peptide.