



[Go to Product page](#)

Datasheet for ABIN1533259  
**anti-E2F4 antibody (AA 51-100)**

2 Images

Overview

Quantity:	100 µL
Target:	E2F4
Binding Specificity:	AA 51-100
Reactivity:	Human, Mouse, Rat
Host:	Rabbit
Clonality:	Polyclonal
Conjugate:	This E2F4 antibody is un-conjugated
Application:	ELISA, Western Blotting (WB), Immunohistochemistry (IHC)

Product Details

Immunogen:	The antiserum was produced against synthesized peptide derived from human E2F4.
Isotype:	IgG
Specificity:	E2F4 Antibody detects endogenous levels of total E2F4 protein.
Purification:	The antibody was purified from rabbit antiserum by affinity-chromatography using immunogen.
Purity:	> 95 %

Target Details

Target:	E2F4
Alternative Name:	E2F4 ( <a href="#">E2F4 Products</a> )
Background:	Synonyms: E2F-4, p107/p130-binding protein

## Target Details

---

NCBI Gene Symbol: E2F5

Molecular Weight: 43 kDa

Gene ID: 1874, 1875

OMIM: 600659

UniProt: [Q16254](#), [Q15329](#)

Pathways: [Cell Division Cycle](#), [Mitotic G1-G1/S Phases](#), [Regulation of Cell Size](#)

## Application Details

---

Application Notes: WB: 1:500~1:1000 IHC: 1:50~1:100 ELISA: 1:40000

Comment: Unigene-Number: Hs.108371, Hs.445758 (NCBI Gene Symbol: E2F5)

Restrictions: For Research Use only

## Handling

---

Format: Liquid

Concentration: 1 mg/mL

Buffer: phosphate buffered saline (without Mg<sup>2+</sup> and Ca<sup>2+</sup>), pH 7.4, 150 mM NaCl, 0.02 % sodium azide and 50 % glycerol.

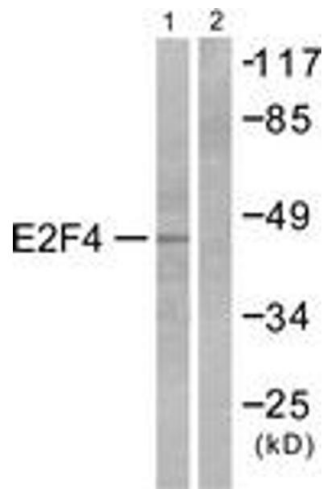
Preservative: Sodium azide

Precaution of Use: This product contains sodium azide: a POISONOUS AND HAZARDOUS SUBSTANCE which should be handled by trained staff only.

Storage: -20 °C

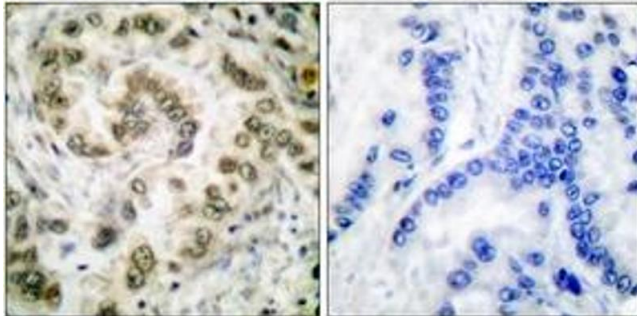
Storage Comment: Stable at -20°C for at least 1 year.

Expiry Date: 12 months



### Western Blotting

**Image 1.** Western blot analysis of extracts from COS7 cells, using E2F4 Antibody. The lane on the right is treated with the synthesized peptide.



### Immunohistochemistry

**Image 2.** Immunohistochemistry analysis of paraffin-embedded human lung carcinoma tissue, using E2F4 Antibody. The picture on the right is treated with the synthesized peptide.