

Datasheet for ABIN1533264

anti-HSD17B10 antibody (AA 111-160)



[Go to Product page](#)

2 Images

Overview

Quantity:	100 µL
Target:	HSD17B10
Binding Specificity:	AA 111-160
Reactivity:	Human, Mouse, Rat
Host:	Rabbit
Clonality:	Polyclonal
Conjugate:	This HSD17B10 antibody is un-conjugated
Application:	Western Blotting (WB), Immunohistochemistry (IHC), ELISA

Product Details

Immunogen:	The antiserum was produced against synthesized peptide derived from human ERAB.
Isotype:	IgG
Specificity:	ERAB Antibody detects endogenous levels of total ERAB protein.
Purification:	The antibody was purified from rabbit antiserum by affinity-chromatography using immunogen.
Purity:	> 95 %

Target Details

Target:	HSD17B10
Alternative Name:	ERAB (HSD17B10 Products)
Background:	Synonyms: 3-hydroxyacyl-CoA dehydrogenase type-2, 3-hydroxyacyl-CoA dehydrogenase type

Target Details

II, Type II HADH, 3-hydroxy-2-methylbutyryl-CoA dehydrogenase, 17-beta-hydroxysteroid dehydrogenase 10, Mitochondrial ribonuclease P protein 2, Endoplasmic reticulum-associated a
NCBI Gene Symbol: HSD17B10

Molecular Weight: 26 kDa

Gene ID: 3028

OMIM: 300220

UniProt: [Q99714](#)

Application Details

Application Notes: WB: 1:500~1:1000 IHC: 1:50~1:100 ELISA: 1:5000

Comment: Unigene-Number: Hs.171280 (NCBI Gene Symbol: HSD17B10)

Restrictions: For Research Use only

Handling

Format: Liquid

Concentration: 1 mg/mL

Buffer: phosphate buffered saline (without Mg²⁺ and Ca²⁺), pH 7.4, 150 mM NaCl, 0.02 % sodium azide and 50 % glycerol.

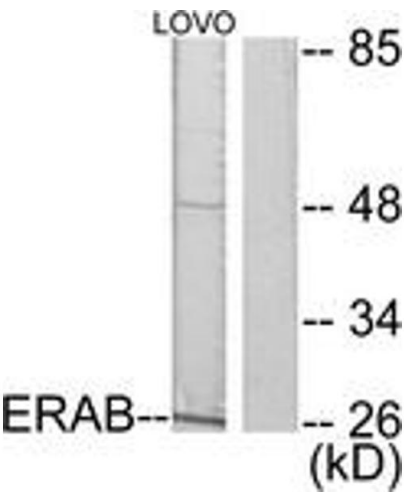
Preservative: Sodium azide

Precaution of Use: This product contains sodium azide: a POISONOUS AND HAZARDOUS SUBSTANCE which should be handled by trained staff only.

Storage: -20 °C

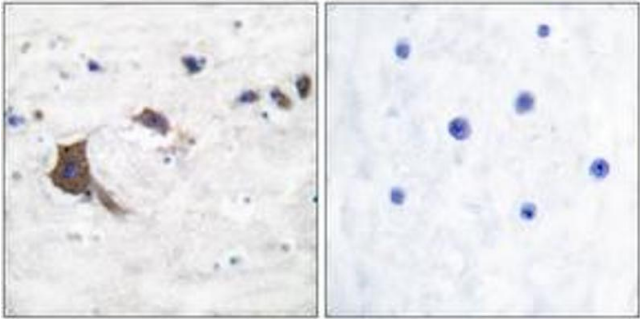
Storage Comment: Stable at -20°C for at least 1 year.

Expiry Date: 12 months



Western Blotting

Image 1. Western blot analysis of extracts from LOVO cells, using ERAB Antibody. The lane on the right is treated with the synthesized peptide.



Immunohistochemistry

Image 2. Immunohistochemistry analysis of paraffin-embedded human brain tissue, using ERAB Antibody. The picture on the right is treated with the synthesized peptide.