

Datasheet for ABIN1533271  
**anti-FGFR10P antibody (AA 341-390)**[Go to Product page](#)

## 2 Images

## Overview

Quantity:	100 µg
Target:	FGFR10P
Binding Specificity:	AA 341-390
Reactivity:	Human, Mouse, Rat
Host:	Rabbit
Clonality:	Polyclonal
Conjugate:	This FGFR10P antibody is un-conjugated
Application:	Western Blotting (WB), Immunohistochemistry (IHC), ELISA

## Product Details

Immunogen:	The antiserum was produced against synthesized peptide derived from human FGFR1 Oncogene Partner.
Isotype:	IgG
Specificity:	FGFR1 Oncogene Partner Antibody detects endogenous levels of total FGFR1 Oncogene Partner protein.
Purification:	The antibody was purified from rabbit antiserum by affinity-chromatography using immunogen.
Purity:	> 95 %

## Target Details

Target:	FGFR10P
---------	---------

## Target Details

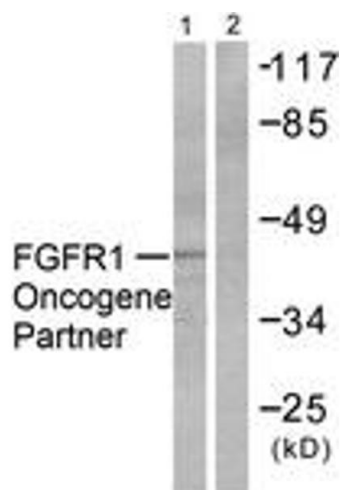
Alternative Name:	FGFR1 Oncogene Partner ( <a href="#">FGFR1OP Products</a> )
Background:	Synonyms: FOP, FIBROBLAST GROWTH FACTOR RECEPTOR 1 ONCOGENE PARTNER NCBI Gene Symbol: FGFR1OP
Molecular Weight:	43 kDa
Gene ID:	11116
OMIM:	605392
UniProt:	<a href="#">O95684</a>
Pathways:	<a href="#">M Phase</a> , <a href="#">Maintenance of Protein Location</a> , <a href="#">SARS-CoV-2 Protein Interactome</a>

## Application Details

Application Notes:	WB: 1:500~1:1000 IHC: 1:50~1:100 ELISA: 1:10000
Comment:	Unigene-Number: Hs.487175 (NCBI Gene Symbol: FGFR1OP)
Restrictions:	For Research Use only

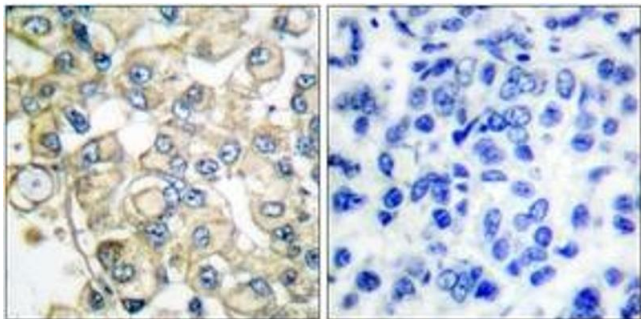
## Handling

Format:	Liquid
Concentration:	1 mg/mL
Buffer:	phosphate buffered saline (without Mg <sup>2+</sup> and Ca <sup>2+</sup> ), pH 7.4, 150 mM NaCl, 0.02 % sodium azide and 50 % glycerol.
Preservative:	Sodium azide
Precaution of Use:	This product contains sodium azide: a POISONOUS AND HAZARDOUS SUBSTANCE which should be handled by trained staff only.
Storage:	-20 °C
Storage Comment:	Stable at -20°C for at least 1 year.
Expiry Date:	12 months



### Western Blotting

**Image 1.** Western blot analysis of extracts from HepG2 cells, using FGFR1 Oncogene Partner Antibody. The lane on the right is treated with the synthesized peptide.



### Immunohistochemistry

**Image 2.** Immunohistochemistry analysis of paraffin-embedded human breast carcinoma tissue, using FGFR1 Oncogene Partner Antibody. The picture on the right is treated with the synthesized peptide.