

Datasheet for ABIN1533276

anti-Fibronectin 1 antibody (AA 2337-2386)[Go to Product page](#)**2** Images

Overview

Quantity:	100 µL
Target:	Fibronectin 1 (FN1)
Binding Specificity:	AA 2337-2386
Reactivity:	Human, Mouse, Rat
Host:	Rabbit
Clonality:	Polyclonal
Conjugate:	This Fibronectin 1 antibody is un-conjugated
Application:	Western Blotting (WB), ELISA, Immunohistochemistry (IHC)

Product Details

Immunogen:	The antiserum was produced against synthesized peptide derived from human Fibronectin 1.
Isotype:	IgG
Specificity:	Fibronectin 1 Antibody detects endogenous levels of total Fibronectin 1 protein.
Purification:	The antibody was purified from rabbit antiserum by affinity-chromatography using immunogen.
Purity:	> 95 %

Target Details

Target:	Fibronectin 1 (FN1)
Alternative Name:	Fibronectin 1 (FN1 Products)
Background:	Synonyms: CIG, cold-insoluble globulin, fibronectin, fibronectin 1, FINC, FN, LETS, migration

Target Details

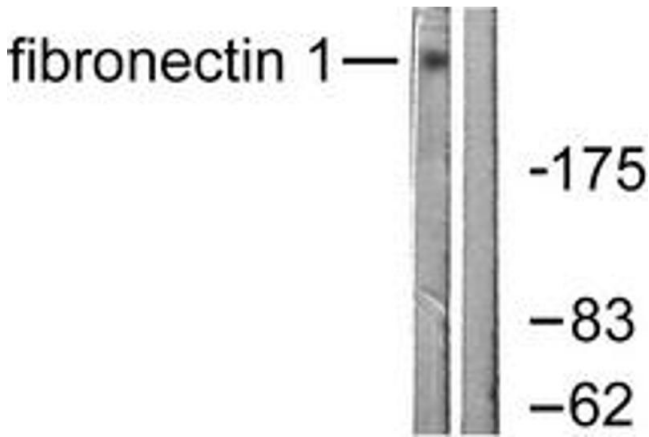
	stimulating factor, migration-stimulating factor, MSF NCBI Gene Symbol: FN1
Molecular Weight:	262 kDa
Gene ID:	2335
OMIM:	135600
UniProt:	P02751
Pathways:	Cellular Response to Molecule of Bacterial Origin , Carbohydrate Homeostasis , Autophagy

Application Details

Application Notes:	WB: 1:500~1:1000 IHC: 1:50~1:100 ELISA: 1:1000
Comment:	Unigene-Number: Hs.203717 (NCBI Gene Symbol: FN1)
Restrictions:	For Research Use only

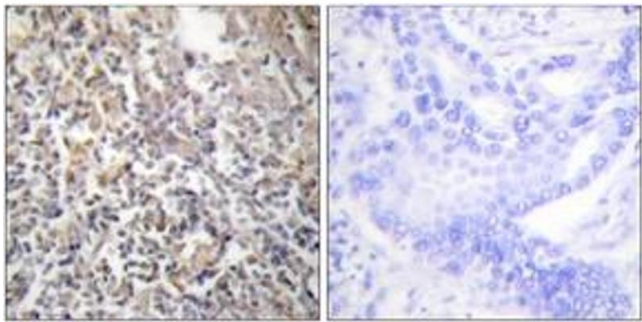
Handling

Format:	Liquid
Concentration:	1 mg/mL
Buffer:	phosphate buffered saline (without Mg2+ and Ca2+), pH 7.4, 150 mM NaCl, 0.02 % sodium azide and 50 % glycerol.
Preservative:	Sodium azide
Precaution of Use:	This product contains sodium azide: a POISONOUS AND HAZARDOUS SUBSTANCE which should be handled by trained staff only.
Storage:	-20 °C
Storage Comment:	Stable at -20°C for at least 1 year.
Expiry Date:	12 months



Western Blotting

Image 1. Western blot analysis of extracts from HeLa cells, using Fibronectin 1 Antibody. The lane on the right is treated with the synthesized peptide.



Immunohistochemistry

Image 2. Immunohistochemistry analysis of paraffin-embedded human thyroid gland tissue, using Fibronectin 1 Antibody. The picture on the right is treated with the synthesized peptide.