

Datasheet for ABIN1533286
anti-Gastrin antibody (AA 52-101)

3 Images

[Go to Product page](#)

Overview

Quantity:	100 µg
Target:	Gastrin (GAST)
Binding Specificity:	AA 52-101
Reactivity:	Human, Rat, Mouse
Host:	Rabbit
Clonality:	Polyclonal
Conjugate:	This Gastrin antibody is un-conjugated
Application:	Western Blotting (WB), Immunohistochemistry (IHC), ELISA, Immunofluorescence (IF)

Product Details

Immunogen:	The antiserum was produced against synthesized peptide derived from human Gastrin.
Isotype:	IgG
Specificity:	Gastrin Antibody detects endogenous levels of total Gastrin protein.
Purification:	The antibody was purified from rabbit antiserum by affinity-chromatography using immunogen.
Purity:	> 95 %

Target Details

Target:	Gastrin (GAST)
Alternative Name:	Gastrin (GAST Products)
Background:	Synonyms: Component II, GAS, GAST, gastrin precursor

Target Details

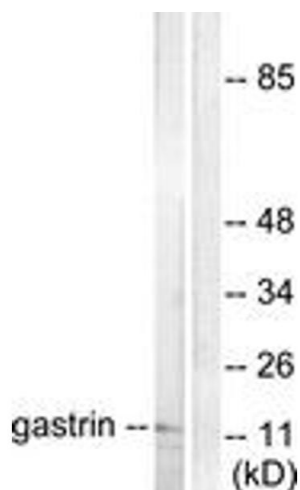
	NCBI Gene Symbol: GAST
Molecular Weight:	11 kDa
Gene ID:	2520
OMIM:	137250
UniProt:	P01350

Application Details

Application Notes:	WB: 1:500~1:1000 IHC: 1:50~1:100 IF: 1:100~1:500 ELISA: 1:10000
Comment:	Unigene-Number: Hs.2681 (NCBI Gene Symbol: GAST)
Restrictions:	For Research Use only

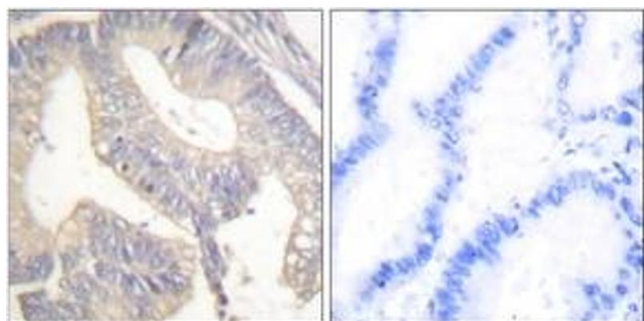
Handling

Format:	Liquid
Concentration:	1 mg/mL
Buffer:	phosphate buffered saline (without Mg ²⁺ and Ca ²⁺), pH 7.4, 150 mM NaCl, 0.02 % sodium azide and 50 % glycerol.
Preservative:	Sodium azide
Precaution of Use:	This product contains sodium azide: a POISONOUS AND HAZARDOUS SUBSTANCE which should be handled by trained staff only.
Storage:	-20 °C
Storage Comment:	Stable at -20°C for at least 1 year.
Expiry Date:	12 months



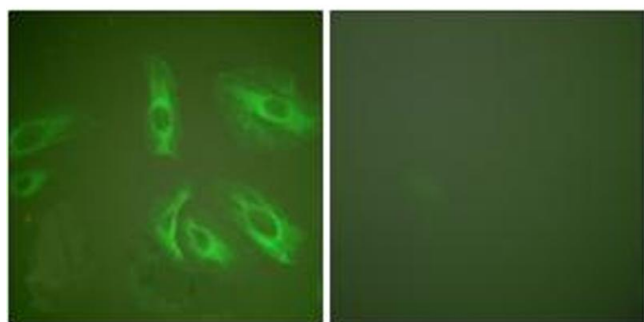
Western Blotting

Image 1. Western blot analysis of extracts from NIH-3T3 cells, using Gastrin Antibody. The lane on the right is treated with the synthesized peptide.



Immunohistochemistry

Image 2. Immunohistochemistry analysis of paraffin-embedded human colon carcinoma tissue, using Gastrin Antibody. The picture on the right is treated with the synthesized peptide.



Immunofluorescence

Image 3. Immunofluorescence analysis of HeLa cells, using Gastrin Antibody. The picture on the right is treated with the synthesized peptide.