

Datasheet for ABIN1533288
anti-mGluR2/3 antibody (AA 823-872)[Go to Product page](#)

2 Images

Overview

Quantity:	100 µg
Target:	mGluR2/3 (GRIA2/3)
Binding Specificity:	AA 823-872
Reactivity:	Human, Rat, Mouse
Host:	Rabbit
Clonality:	Polyclonal
Conjugate:	This mGluR2/3 antibody is un-conjugated
Application:	Western Blotting (WB), Immunohistochemistry (IHC), ELISA

Product Details

Immunogen:	The antiserum was produced against synthesized peptide derived from human mGluR2/3.
Isotype:	IgG
Specificity:	mGluR2/3 Antibody detects endogenous levels of total mGluR2/3 protein.
Purification:	The antibody was purified from rabbit antiserum by affinity-chromatography using immunogen.
Purity:	> 95 %

Target Details

Target:	mGluR2/3 (GRIA2/3)
Alternative Name:	mGluR2/3 (GRIA2/3 Products)
Background:	Synonyms: GPRC1C, GRM3, MGR3, Metabotropic glutamate receptor 3 precursor, glutamate

Target Details

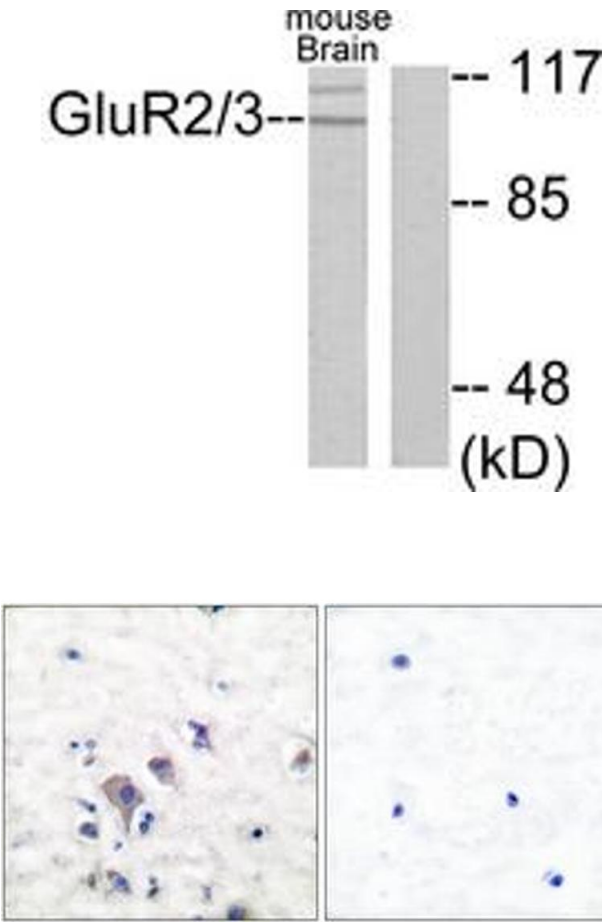
	receptor, metabotropic, type 3 NCBI Gene Symbol: GRM2
Molecular Weight:	95 kDa
Gene ID:	2912, 2913
OMIM:	604099
UniProt:	Q14416 , Q14832

Application Details

Application Notes:	WB: 1:500~1:1000 IHC: 1:50~1:100 ELISA: 1:1000
Comment:	Unigene-Number: Hs.121510, Hs.590575 (NCBI Gene Symbol: GRM2)
Restrictions:	For Research Use only

Handling

Format:	Liquid
Concentration:	1 mg/mL
Buffer:	phosphate buffered saline (without Mg ²⁺ and Ca ²⁺), pH 7.4, 150 mM NaCl, 0.02 % sodium azide and 50 % glycerol.
Preservative:	Sodium azide
Precaution of Use:	This product contains sodium azide: a POISONOUS AND HAZARDOUS SUBSTANCE which should be handled by trained staff only.
Storage:	-20 °C
Storage Comment:	Stable at -20°C for at least 1 year.
Expiry Date:	12 months



Western Blotting

Image 1. Western blot analysis of extracts from mouse brain cells, using mGluR2/3 Antibody. The lane on the right is treated with the synthesized peptide.

Immunohistochemistry

Image 2. Immunohistochemistry analysis of paraffin-embedded human brain tissue, using mGluR2/3 Antibody. The picture on the right is treated with the synthesized peptide.