

Datasheet for ABIN1533295  
**anti-SLC2A3 antibody (AA 447-496)**[Go to Product page](#)

## 2 Images

## Overview

Quantity:	100 µg
Target:	SLC2A3
Binding Specificity:	AA 447-496
Reactivity:	Human
Host:	Rabbit
Clonality:	Polyclonal
Conjugate:	This SLC2A3 antibody is un-conjugated
Application:	Western Blotting (WB), ELISA, Immunohistochemistry (IHC)

## Product Details

Immunogen:	The antiserum was produced against synthesized peptide derived from human GLUT3.
Isotype:	IgG
Specificity:	GLUT3 Antibody detects endogenous levels of total GLUT3 protein.
Purification:	The antibody was purified from rabbit antiserum by affinity-chromatography using immunogen.
Purity:	> 95 %

## Target Details

Target:	SLC2A3
Alternative Name:	GLUT3 ( <a href="#">SLC2A3 Products</a> )
Background:	Synonyms: Solute carrier family 2 facilitated glucose transporter member 3, Glucose

## Target Details

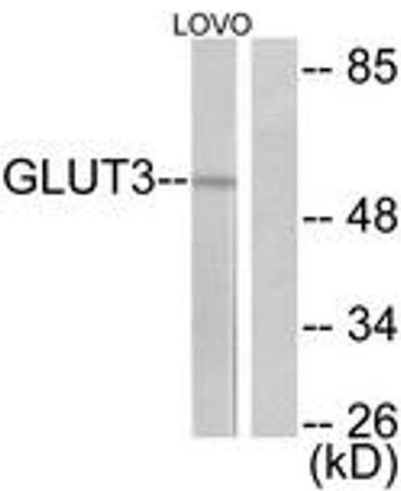
	transporter type 3 brain, GLUT-3 , SLC2A3 , GLUT3 NCBI Gene Symbol: SLC2A3
Molecular Weight:	53 kDa
Gene ID:	6515
OMIM:	138170
UniProt:	<a href="#">P11169</a>
Pathways:	<a href="#">Warburg Effect</a>

## Application Details

Application Notes:	WB: 1:500~1:1000 IHC: 1:50~1:100 ELISA: 1:1000
Comment:	Unigene-Number: Hs.419240 (NCBI Gene Symbol: SLC2A3)
Restrictions:	For Research Use only

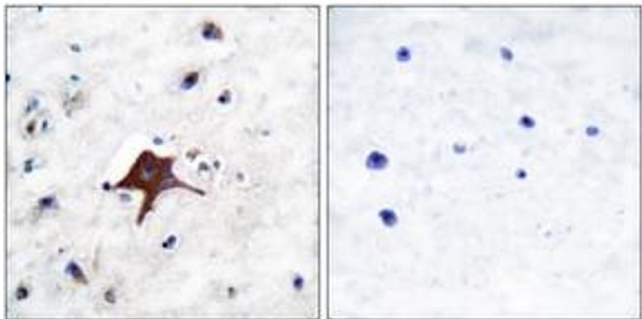
## Handling

Format:	Liquid
Concentration:	1 mg/mL
Buffer:	phosphate buffered saline (without Mg <sup>2+</sup> and Ca <sup>2+</sup> ), pH 7.4, 150 mM NaCl, 0.02 % sodium azide and 50 % glycerol.
Preservative:	Sodium azide
Precaution of Use:	This product contains sodium azide: a POISONOUS AND HAZARDOUS SUBSTANCE which should be handled by trained staff only.
Storage:	-20 °C
Storage Comment:	Stable at -20°C for at least 1 year.
Expiry Date:	12 months



#### Western Blotting

**Image 1.** Western blot analysis of extracts from LOVO cells, using GLUT3 Antibody. The lane on the right is treated with the synthesized peptide.



#### Immunohistochemistry

**Image 2.** Immunohistochemistry analysis of paraffin-embedded human brain tissue, using GLUT3 Antibody. The picture on the right is treated with the synthesized peptide.