

Datasheet for ABIN1533297
anti-HSPA9 antibody (AA 630-679)



[Go to Product page](#)

3 Images

Overview

Quantity:	100 µL
Target:	HSPA9
Binding Specificity:	AA 630-679
Reactivity:	Human, Rat, Mouse
Host:	Rabbit
Clonality:	Polyclonal
Conjugate:	This HSPA9 antibody is un-conjugated
Application:	Western Blotting (WB), Immunohistochemistry (IHC), ELISA, Immunofluorescence (IF)

Product Details

Immunogen:	The antiserum was produced against synthesized peptide derived from human GRP75.
Isotype:	IgG
Specificity:	GRP75 Antibody detects endogenous levels of total GRP75 protein.
Purification:	The antibody was purified from rabbit antiserum by affinity-chromatography using immunogen.
Purity:	> 95 %

Target Details

Target:	HSPA9
Alternative Name:	GRP75 (HSPA9 Products)
Background:	Synonyms: HSPA9B, MOT2, HEAT-SHOCK 70-KD PROTEIN 9B, MORTALIN 2, MORTALIN,

Target Details

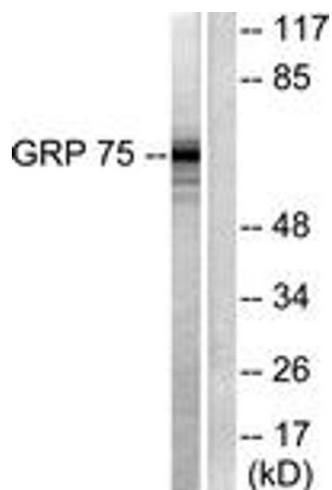
	PERINUCLEAR, heat shock 70 kDa protein 9B (mortalin-2) NCBI Gene Symbol: HSPA9
Molecular Weight:	73 kDa
Gene ID:	3313
OMIM:	600548
UniProt:	P38646 , Q8N1C8

Application Details

Application Notes:	WB: 1:500~1:1000 IHC: 1:50~1:100 IF: 1:100~1:500 ELISA: 1:5000
Comment:	Unigene-Number: Hs.184233, Hs.184233 (NCBI Gene Symbol: HSPA9)
Restrictions:	For Research Use only

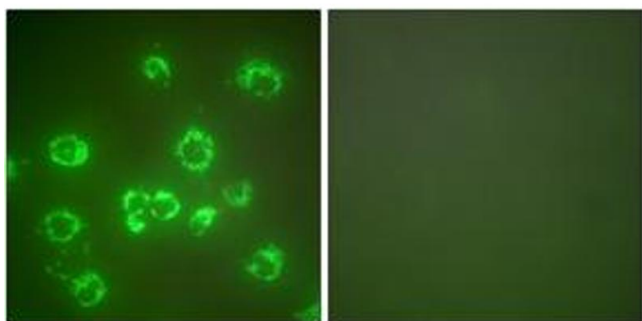
Handling

Format:	Liquid
Concentration:	1 mg/mL
Buffer:	phosphate buffered saline (without Mg ²⁺ and Ca ²⁺), pH 7.4, 150 mM NaCl, 0.02 % sodium azide and 50 % glycerol.
Preservative:	Sodium azide
Precaution of Use:	This product contains sodium azide: a POISONOUS AND HAZARDOUS SUBSTANCE which should be handled by trained staff only.
Storage:	-20 °C
Storage Comment:	Stable at -20°C for at least 1 year.
Expiry Date:	12 months



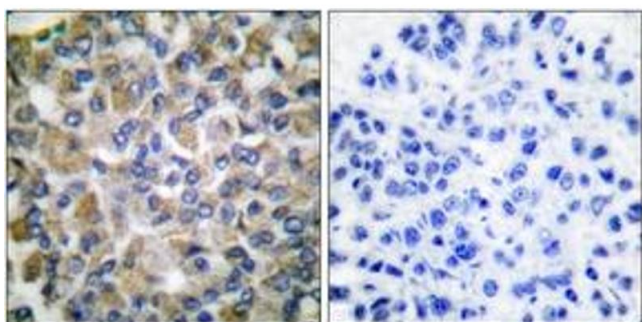
Western Blotting

Image 1. Western blot analysis of extracts from COS7 cells, using GRP75 Antibody. The lane on the right is treated with the synthesized peptide.



Immunofluorescence

Image 2. Immunofluorescence analysis of COS7 cells, using GRP75 Antibody. The picture on the right is treated with the synthesized peptide.



Immunohistochemistry (Paraffin-embedded Sections)

Image 3. Immunohistochemistry analysis of paraffin-embedded human breast carcinoma tissue, using GRP75 Antibody. The picture on the right is treated with the synthesized peptide.