

Datasheet for ABIN1533301  
**anti-HCG beta antibody (AA 101-150)**



[Go to Product page](#)

2 Images

### Overview

Quantity:	100 µg
Target:	HCG beta
Binding Specificity:	AA 101-150
Reactivity:	Human
Host:	Rabbit
Clonality:	Polyclonal
Conjugate:	This HCG beta antibody is un-conjugated
Application:	ELISA, Western Blotting (WB), Immunohistochemistry (IHC)

### Product Details

Immunogen:	The antiserum was produced against synthesized peptide derived from human hCG beta.
Isotype:	IgG
Specificity:	hCG beta Antibody detects endogenous levels of total hCG beta protein.
Purification:	The antibody was purified from rabbit antiserum by affinity-chromatography using immunogen.
Purity:	> 95 %

### Target Details

Target:	HCG beta
Abstract:	<a href="#">HCG beta Products</a>
Background:	Synonyms: Choriogonadotropin subunit beta, CG-beta, Chorionic gonadotrophin chain beta

## Target Details

---

NCBI Gene Symbol: CGB

Molecular Weight: 17 kDa

Gene ID: 1082, 93659, 94027

OMIM: 118860

UniProt: [P01233](#)

## Application Details

---

Application Notes: WB: 1:500~1:1000 IHC: 1:50~1:100 ELISA: 1:10000

Comment: Unigene-Number: Hs.172944, Hs.446683, Hs.590955, Hs.659014, Hs.681647, Hs.724983 (NCBI Gene Symbol: CGB)

Restrictions: For Research Use only

## Handling

---

Format: Liquid

Concentration: 1 mg/mL

Buffer: phosphate buffered saline (without Mg<sup>2+</sup> and Ca<sup>2+</sup>), pH 7.4, 150 mM NaCl, 0.02 % sodium azide and 50 % glycerol.

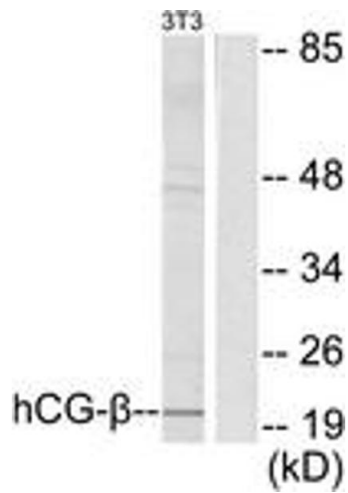
Preservative: Sodium azide

Precaution of Use: This product contains sodium azide: a POISONOUS AND HAZARDOUS SUBSTANCE which should be handled by trained staff only.

Storage: -20 °C

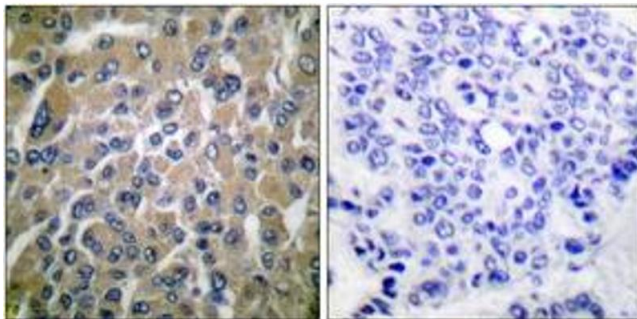
Storage Comment: Stable at -20°C for at least 1 year.

Expiry Date: 12 months



### Western Blotting

**Image 1.** Western blot analysis of extracts from NIH-3T3 cells, using hCG beta Antibody. The lane on the right is treated with the synthesized peptide.



### Immunohistochemistry

**Image 2.** Immunohistochemistry analysis of paraffin-embedded human breast carcinoma tissue, using hCG beta Antibody. The picture on the right is treated with the synthesized peptide.