



[Go to Product page](#)

Datasheet for ABIN1533305  
**anti-HDAC5 antibody (AA 1073-1122)**

3 Images

### Overview

Quantity:	100 µL
Target:	HDAC5
Binding Specificity:	AA 1073-1122
Reactivity:	Human, Mouse, Rat
Host:	Rabbit
Clonality:	Polyclonal
Conjugate:	This HDAC5 antibody is un-conjugated
Application:	Western Blotting (WB), Immunohistochemistry (IHC), ELISA, Immunofluorescence (IF)

### Product Details

Immunogen:	The antiserum was produced against synthesized peptide derived from human HDAC5.
Isotype:	IgG
Specificity:	HDAC5 Antibody detects endogenous levels of total HDAC5 protein.
Purification:	The antibody was purified from rabbit antiserum by affinity-chromatography using immunogen.
Purity:	> 95 %

### Target Details

Target:	HDAC5
Alternative Name:	HDAC5 ( <a href="#">HDAC5 Products</a> )
Background:	Synonyms: Antigen NY-CO-9, HD5, Histone deacetylase 5, Histone deacetylase mHDA1,

## Target Details

---

KIAA0600  
NCBI Gene Symbol: HDAC5

Molecular Weight: 121 kDa

Gene ID: 10014

OMIM: 605315

UniProt: [Q9UQL6](#)

Pathways: [Regulation of Muscle Cell Differentiation](#), [Skeletal Muscle Fiber Development](#), [Monocarboxylic Acid Catabolic Process](#)

## Application Details

---

Application Notes: WB: 1:500~1:1000 IHC: 1:50~1:100 IF: 1:100~1:500 ELISA: 1:5000

Comment: Unigene-Number: Hs.438782 (NCBI Gene Symbol: HDAC5)

Restrictions: For Research Use only

## Handling

---

Format: Liquid

Concentration: 1 mg/mL

Buffer: phosphate buffered saline (without Mg<sup>2+</sup> and Ca<sup>2+</sup>), pH 7.4, 150 mM NaCl, 0.02 % sodium azide and 50 % glycerol.

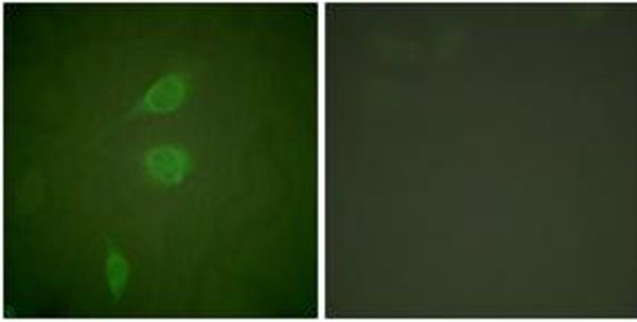
Preservative: Sodium azide

Precaution of Use: This product contains sodium azide: a POISONOUS AND HAZARDOUS SUBSTANCE which should be handled by trained staff only.

Storage: -20 °C

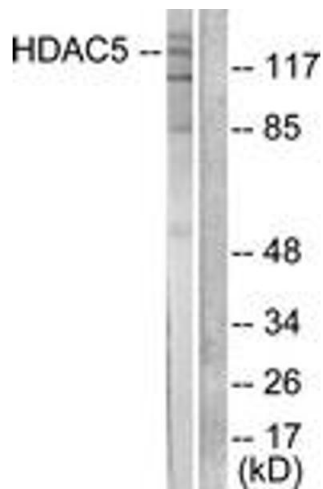
Storage Comment: Stable at -20°C for at least 1 year.

Expiry Date: 12 months



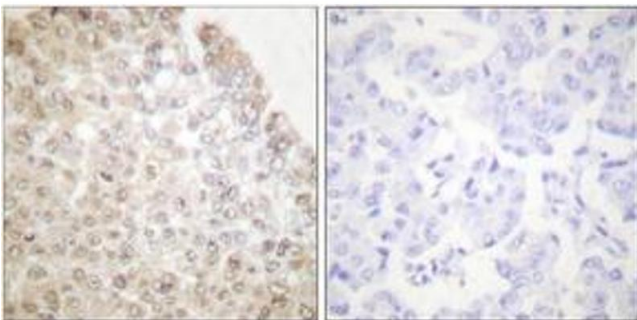
### Immunofluorescence

**Image 1.** Immunofluorescence analysis of NIH-3T3 cells, using HDAC5 Antibody. The picture on the right is treated with the synthesized peptide.



### Western Blotting

**Image 2.** Western blot analysis of extracts from HepG2 cells, treated with PMA 125ng/ml 30', using HDAC5 Antibody. The lane on the right is treated with the synthesized peptide.



### Immunohistochemistry

**Image 3.** Immunohistochemistry analysis of paraffin-embedded human breast carcinoma tissue, using HDAC5 Antibody. The picture on the right is treated with the synthesized peptide.