

Datasheet for ABIN1533310  
**anti-HSPE1 antibody (AA 51-100)**



[Go to Product page](#)

3 Images

## Overview

Quantity:	100 µL
Target:	HSPE1
Binding Specificity:	AA 51-100
Reactivity:	Human, Mouse, Rat
Host:	Rabbit
Clonality:	Polyclonal
Conjugate:	This HSPE1 antibody is un-conjugated
Application:	Western Blotting (WB), ELISA, Immunohistochemistry (IHC), Immunofluorescence (IF)

## Product Details

Immunogen:	The antiserum was produced against synthesized peptide derived from human HSP10.
Isotype:	IgG
Specificity:	HSP10 Antibody detects endogenous levels of total HSP10 protein.
Purification:	The antibody was purified from rabbit antiserum by affinity-chromatography using immunogen.
Purity:	> 95 %

## Target Details

Target:	HSPE1
Alternative Name:	HSP10 ( <a href="#">HSPE1 Products</a> )
Background:	Synonyms: CHAPERONIN 10 HOMOLOG, GroES HOMOLOG, HEAT-SHOCK 10-KD PROTEIN

### Target Details

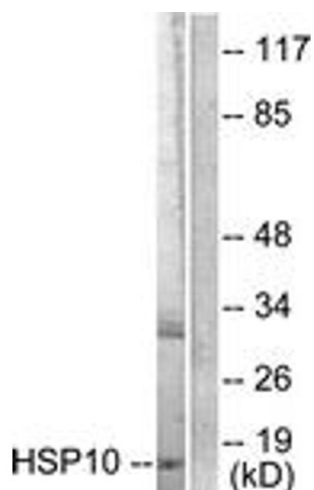
	cpn10 HOMOLOG, heat shock 10 kDa protein 1 (chaperonin 10) NCBI Gene Symbol: HSPE1
Molecular Weight:	10 kDa
Gene ID:	3336
OMIM:	600141
UniProt:	<a href="#">P61604</a>
Pathways:	<a href="#">Positive Regulation of Endopeptidase Activity</a>

### Application Details

Application Notes:	WB: 1:500~1:1000 IHC: 1:50~1:100 IF: 1:100~1:500 ELISA: 1:10000
Comment:	Unigene-Number: Hs.1197 (NCBI Gene Symbol: HSPE1)
Restrictions:	For Research Use only

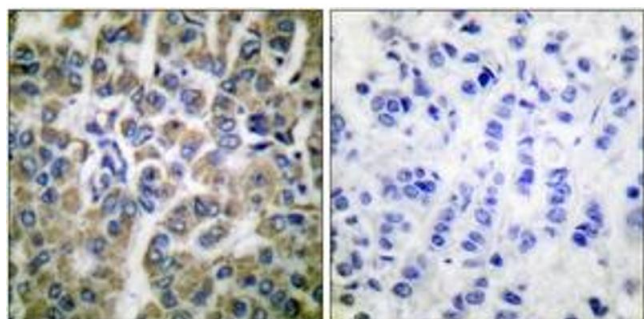
### Handling

Format:	Liquid
Concentration:	1 mg/mL
Buffer:	phosphate buffered saline (without Mg <sup>2+</sup> and Ca <sup>2+</sup> ), pH 7.4, 150 mM NaCl, 0.02 % sodium azide and 50 % glycerol.
Preservative:	Sodium azide
Precaution of Use:	This product contains sodium azide: a POISONOUS AND HAZARDOUS SUBSTANCE which should be handled by trained staff only.
Storage:	-20 °C
Storage Comment:	Stable at -20°C for at least 1 year.
Expiry Date:	12 months



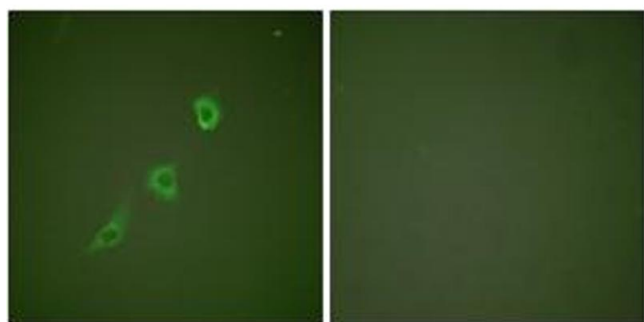
#### Western Blotting

**Image 1.** Western blot analysis of extracts from NIH-3T3 cells, using HSP10 Antibody. The lane on the right is treated with the synthesized peptide.



#### Immunohistochemistry

**Image 2.** Immunohistochemistry analysis of paraffin-embedded human breast carcinoma tissue, using HSP10 Antibody. The picture on the right is treated with the synthesized peptide.



#### Immunofluorescence

**Image 3.** Immunofluorescence analysis of NIH-3T3 cells, using HSP10 Antibody. The picture on the right is treated with the synthesized peptide.