

Datasheet for ABIN1533311
anti-HSPH1 antibody (AA 791-840)

3 Images

[Go to Product page](#)

Overview

Quantity:	100 µg
Target:	HSPH1
Binding Specificity:	AA 791-840
Reactivity:	Human, Mouse
Host:	Rabbit
Clonality:	Polyclonal
Conjugate:	This HSPH1 antibody is un-conjugated
Application:	Western Blotting (WB), Immunohistochemistry (IHC), ELISA, Immunofluorescence (IF)

Product Details

Immunogen:	The antiserum was produced against synthesized peptide derived from human HSP105.
Isotype:	IgG
Specificity:	HSP105 Antibody detects endogenous levels of total HSP105 protein.
Purification:	The antibody was purified from rabbit antiserum by affinity-chromatography using immunogen.
Purity:	> 95 %

Target Details

Target:	HSPH1
Alternative Name:	HSP105 (HSPH1 Products)
Background:	Synonyms: heat shock 105 kDa/110 kDa protein 1

Target Details

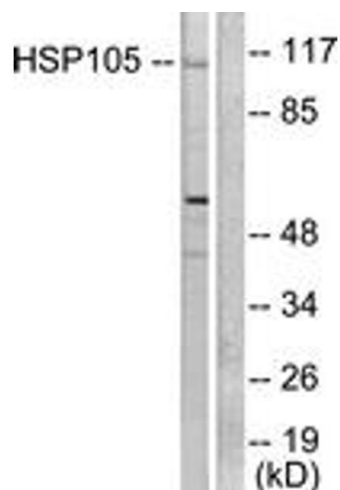
	NCBI Gene Symbol: HSPH1
Molecular Weight:	96 kDa
Gene ID:	10808
OMIM:	610703
UniProt:	Q92598

Application Details

Application Notes:	WB: 1:500~1:1000 IHC: 1:50~1:100 IF: 1:100~1:500 ELISA: 1:10000
Comment:	Unigene-Number: Hs.36927 (NCBI Gene Symbol: HSPH1)
Restrictions:	For Research Use only

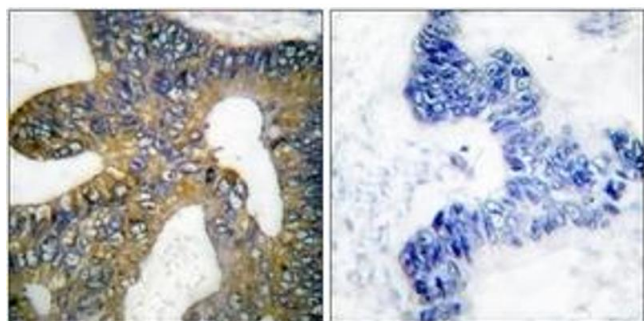
Handling

Format:	Liquid
Concentration:	1 mg/mL
Buffer:	phosphate buffered saline (without Mg ²⁺ and Ca ²⁺), pH 7.4, 150 mM NaCl, 0.02 % sodium azide and 50 % glycerol.
Preservative:	Sodium azide
Precaution of Use:	This product contains sodium azide: a POISONOUS AND HAZARDOUS SUBSTANCE which should be handled by trained staff only.
Storage:	-20 °C
Storage Comment:	Stable at -20°C for at least 1 year.
Expiry Date:	12 months



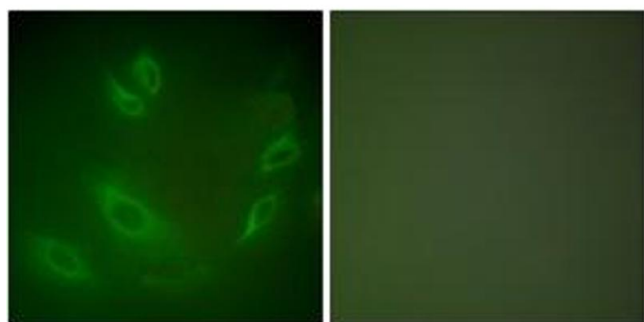
Western Blotting

Image 1. Western blot analysis of extracts from HeLa cells, using HSP105 Antibody. The lane on the right is treated with the synthesized peptide.



Immunohistochemistry

Image 2. Immunohistochemistry analysis of paraffin-embedded human colon carcinoma tissue, using HSP105 Antibody. The picture on the right is treated with the synthesized peptide.



Immunofluorescence

Image 3. Immunofluorescence analysis of HeLa cells, using HSP105 Antibody. The picture on the right is treated with the synthesized peptide.