

Datasheet for ABIN1533314  
**anti-HSP90AA1 antibody (AA 683-732)**



[Go to Product page](#)

3 Images

## Overview

Quantity:	100 µL
Target:	HSP90AA1
Binding Specificity:	AA 683-732
Reactivity:	Human, Mouse, Rat
Host:	Rabbit
Clonality:	Polyclonal
Conjugate:	This HSP90AA1 antibody is un-conjugated
Application:	Western Blotting (WB), Immunohistochemistry (IHC), ELISA, Immunofluorescence (IF)

## Product Details

Immunogen:	The antiserum was produced against synthesized peptide derived from human HSP90A.
Isotype:	IgG
Specificity:	HSP90A Antibody detects endogenous levels of total HSP90A protein.
Purification:	The antibody was purified from rabbit antiserum by affinity-chromatography using immunogen.
Purity:	> 95 %

## Target Details

Target:	HSP90AA1
Alternative Name:	HSP90A ( <a href="#">HSP90AA1 Products</a> )
Background:	Synonyms: Heat shock protein HSP 90-alpha, HSP 86, Renal carcinoma antigen NY-REN-38,

## Target Details

---

HSP90AA1, HSP90A, HSPC1, HSPCA

NCBI Gene Symbol: HSP90AA1

Molecular Weight: 84 kDa

Gene ID: 3320

OMIM: 140571

UniProt: [P07900](#)

Pathways: [M Phase, Regulation of Cell Size, Signaling Events mediated by VEGFR1 and VEGFR2, VEGFR1 Specific Signals](#)

## Application Details

---

Application Notes: WB: 1:500~1:1000 IHC: 1:50~1:100 IF: 1:100~1:500 ELISA: 1:40000

Comment: Unigene-Number: Hs.525600 (NCBI Gene Symbol: HSP90AA1)

Restrictions: For Research Use only

## Handling

---

Format: Liquid

Concentration: 1 mg/mL

Buffer: phosphate buffered saline (without Mg<sup>2+</sup> and Ca<sup>2+</sup>), pH 7.4, 150 mM NaCl, 0.02 % sodium azide and 50 % glycerol.

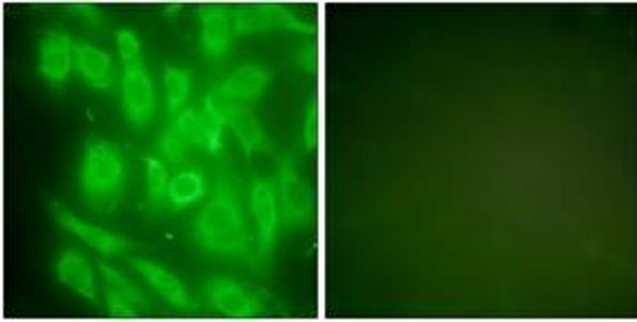
Preservative: Sodium azide

Precaution of Use: This product contains sodium azide: a POISONOUS AND HAZARDOUS SUBSTANCE which should be handled by trained staff only.

Storage: -20 °C

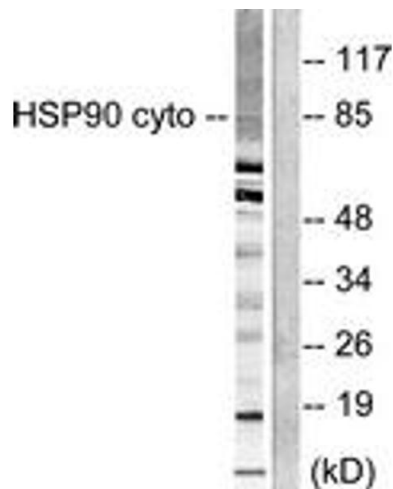
Storage Comment: Stable at -20°C for at least 1 year.

Expiry Date: 12 months



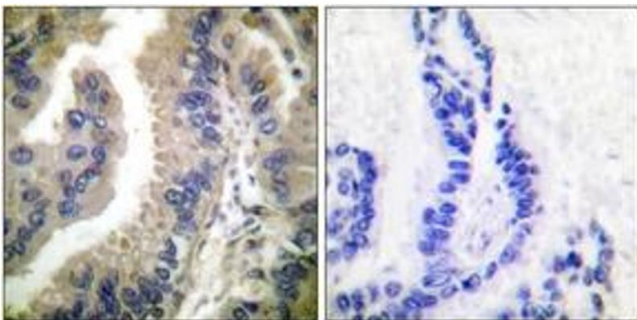
### Immunofluorescence

**Image 1.** Immunofluorescence analysis of NIH-3T3 cells, using HSP90A Antibody. The picture on the right is treated with the synthesized peptide.



### Western Blotting

**Image 2.** Western blot analysis of extracts from NIH-3T3 cells, using HSP90A Antibody. The lane on the right is treated with the synthesized peptide.



### Immunohistochemistry

**Image 3.** Immunohistochemistry analysis of paraffin-embedded human lung carcinoma tissue, using HSP90A Antibody. The picture on the right is treated with the synthesized peptide.