

Datasheet for ABIN1533316  
**anti-Involucrin antibody (AA 536-585)**



[Go to Product page](#)

2 Images

## Overview

|                      |  |
|----------------------|--|
| Quantity:            | 100 µL   |
| Target:              | Involucrin (IVL)   |
| Binding Specificity: | AA 536-585   |
| Reactivity:          | Human  |
| Host:                | Rabbit   |
| Clonality:           | Polyclonal   |
| Conjugate:           | This Involucrin antibody is un-conjugated                |
| Application:         | Western Blotting (WB), Immunohistochemistry (IHC), ELISA |

## Product Details

|               |   |
|---------------|---|
| Immunogen:    | The antiserum was produced against synthesized peptide derived from human Involucrin.       |
| Isotype:      | IgG   |
| Specificity:  | Involucrin Antibody detects endogenous levels of total Involucrin protein.                  |
| Purification: | The antibody was purified from rabbit antiserum by affinity-chromatography using immunogen. |
| Purity:       | > 95 %  |

## Target Details

|                   |   |
|-------------------|---|
| Target:           | Involucrin (IVL)                            |
| Alternative Name: | Involucrin ( <a href="#">IVL Products</a> ) |
| Background:       | Synonyms: Involucrin, IVL                   |

## Target Details

NCBI Gene Symbol: IVL

Molecular Weight: 68 kDa

Gene ID: 3713

OMIM: 147360

UniProt: [P07476](#)

## Application Details

Application Notes: WB: 1:500~1:1000 IHC: 1:50~1:100 ELISA: 1:20000

Comment: Unigene-Number: Hs.516439 (NCBI Gene Symbol: IVL)

Restrictions: For Research Use only

## Handling

Format: Liquid

Concentration: 1 mg/mL

Buffer: phosphate buffered saline (without Mg<sup>2+</sup> and Ca<sup>2+</sup>), pH 7.4, 150 mM NaCl, 0.02 % sodium azide and 50 % glycerol.

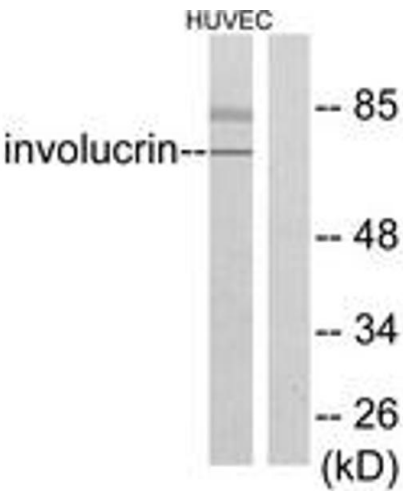
Preservative: Sodium azide

Precaution of Use: This product contains sodium azide: a POISONOUS AND HAZARDOUS SUBSTANCE which should be handled by trained staff only.

Storage: -20 °C

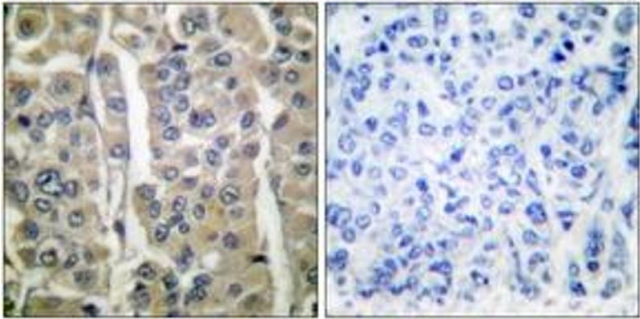
Storage Comment: Stable at -20°C for at least 1 year.

Expiry Date: 12 months



Western Blotting

**Image 1.** Western blot analysis of extracts from HuvEc cells, using Involucrin Antibody. The lane on the right is treated with the synthesized peptide.



Immunohistochemistry

**Image 2.** Immunohistochemistry analysis of paraffin-embedded human breast carcinoma tissue, using Involucrin Antibody. The picture on the right is treated with the synthesized peptide.