

Datasheet for ABIN1533318  
**anti-PRAF2 antibody (AA 129-178)**[Go to Product page](#)

## 2 Images

## Overview

Quantity:	100 µg
Target:	PRAF2
Binding Specificity:	AA 129-178
Reactivity:	Human, Mouse, Rat
Host:	Rabbit
Clonality:	Polyclonal
Conjugate:	This PRAF2 antibody is un-conjugated
Application:	Western Blotting (WB), Immunohistochemistry (IHC), ELISA

## Product Details

Immunogen:	The antiserum was produced against synthesized peptide derived from human JM4.
Isotype:	IgG
Specificity:	JM4 Antibody detects endogenous levels of total JM4 protein.
Purification:	The antibody was purified from rabbit antiserum by affinity-chromatography using immunogen.
Purity:	> 95 %

## Target Details

Target:	PRAF2
Alternative Name:	JM4 ( <a href="#">PRAF2 Products</a> )
Background:	Synonyms: PRA1 family protein 2, PRAF2

## Target Details

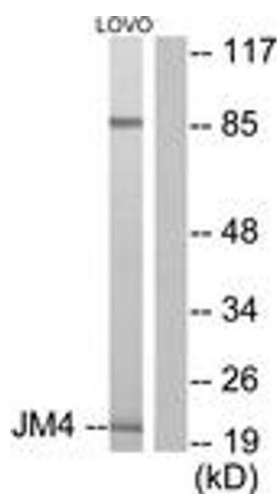
	NCBI Gene Symbol: PRAF2
Molecular Weight:	19 kDa
Gene ID:	11230
UniProt:	<a href="#">O60831</a>
Pathways:	<a href="#">Dicarboxylic Acid Transport</a>

## Application Details

Application Notes:	WB: 1:500~1:1000 IHC: 1:50~1:100 ELISA: 1:40000
Comment:	Unigene-Number: Hs.29595 (NCBI Gene Symbol: PRAF2)
Restrictions:	For Research Use only

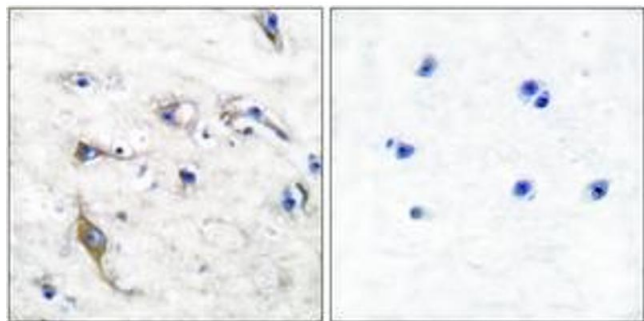
## Handling

Format:	Liquid
Concentration:	1 mg/mL
Buffer:	phosphate buffered saline (without Mg <sup>2+</sup> and Ca <sup>2+</sup> ), pH 7.4, 150 mM NaCl, 0.02 % sodium azide and 50 % glycerol.
Preservative:	Sodium azide
Precaution of Use:	This product contains sodium azide: a POISONOUS AND HAZARDOUS SUBSTANCE which should be handled by trained staff only.
Storage:	-20 °C
Storage Comment:	Stable at -20°C for at least 1 year.
Expiry Date:	12 months



Western Blotting

**Image 1.** Western blot analysis of extracts from LOVO cells, using JM4 Antibody. The lane on the right is treated with the synthesized peptide.



Immunohistochemistry

**Image 2.** Immunohistochemistry analysis of paraffin-embedded human brain tissue, using JM4 Antibody. The picture on the right is treated with the synthesized peptide.