

Datasheet for ABIN1533322  
**anti-KRT17 antibody (AA 381-430)**



[Go to Product page](#)

3 Images

## Overview

Quantity:	100 µL
Target:	KRT17
Binding Specificity:	AA 381-430
Reactivity:	Human, Rat, Mouse
Host:	Rabbit
Clonality:	Polyclonal
Conjugate:	This KRT17 antibody is un-conjugated
Application:	Western Blotting (WB), Immunohistochemistry (IHC), Immunofluorescence (IF), ELISA

## Product Details

Immunogen:	The antiserum was produced against synthesized peptide derived from human Keratin 17.
Isotype:	IgG
Specificity:	Keratin 17 Antibody detects endogenous levels of total Keratin 17 protein.
Purification:	The antibody was purified from rabbit antiserum by affinity-chromatography using immunogen.
Purity:	> 95 %

## Target Details

Target:	KRT17
Alternative Name:	Keratin 17 ( <a href="#">KRT17 Products</a> )
Background:	Synonyms: Keratin, type I cytoskeletal 17, Cytokeratin-17, CK-17, K17

## Target Details

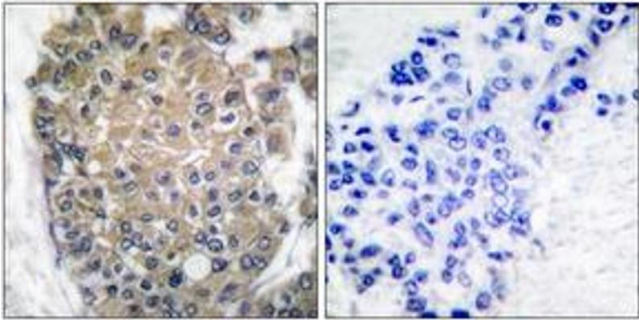
	NCBI Gene Symbol: KRT17
Molecular Weight:	48 kDa
Gene ID:	3872
OMIM:	148069
UniProt:	<a href="#">Q04695</a>

## Application Details

Application Notes:	WB: 1:500~1:1000 IHC: 1:50~1:100 IF: 1:100~1:500 ELISA: 1:20000
Comment:	Unigene-Number: Hs.2785 (NCBI Gene Symbol: KRT17)
Restrictions:	For Research Use only

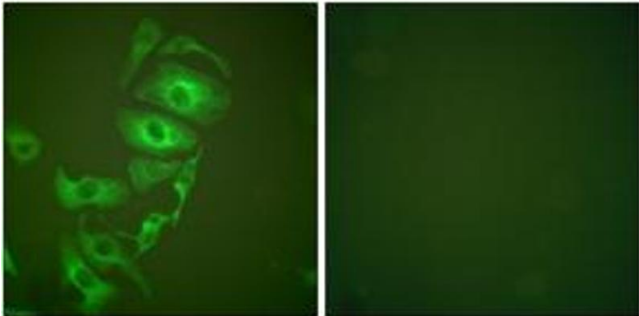
## Handling

Format:	Liquid
Concentration:	1 mg/mL
Buffer:	phosphate buffered saline (without Mg <sup>2+</sup> and Ca <sup>2+</sup> ), pH 7.4, 150 mM NaCl, 0.02 % sodium azide and 50 % glycerol.
Preservative:	Sodium azide
Precaution of Use:	This product contains sodium azide: a POISONOUS AND HAZARDOUS SUBSTANCE which should be handled by trained staff only.
Storage:	-20 °C
Storage Comment:	Stable at -20°C for at least 1 year.
Expiry Date:	12 months



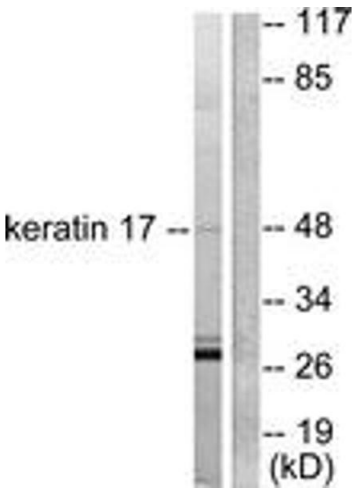
### Immunohistochemistry

**Image 1.** Immunohistochemistry analysis of paraffin-embedded human breast carcinoma tissue, using Keratin 17 Antibody. The picture on the right is treated with the synthesized peptide.



### Immunofluorescence

**Image 2.** Immunofluorescence analysis of HepG2 cells, using Keratin 17 Antibody. The picture on the right is treated with the synthesized peptide.



### Western Blotting

**Image 3.** Western blot analysis of extracts from HuvEc cells, using Keratin 17 Antibody. The lane on the right is treated with the synthesized peptide.