

Datasheet for ABIN1533329  
**anti-Keratin 10 antibody (AA 136-185)**



[Go to Product page](#)

2 Images

## Overview

Quantity:	100 µL
Target:	Keratin 10 (KRT10)
Binding Specificity:	AA 136-185
Reactivity:	Human, Mouse, Rat
Host:	Rabbit
Clonality:	Polyclonal
Conjugate:	This Keratin 10 antibody is un-conjugated
Application:	Western Blotting (WB), Immunofluorescence (IF), ELISA

## Product Details

Immunogen:	The antiserum was produced against synthesized peptide derived from human Keratin 10.
Isotype:	IgG
Specificity:	Keratin 10 Antibody detects endogenous levels of total Keratin 10 protein.
Purification:	The antibody was purified from rabbit antiserum by affinity-chromatography using immunogen.
Purity:	> 95 %

## Target Details

Target:	Keratin 10 (KRT10)
Alternative Name:	Keratin 10 ( <a href="#">KRT10 Products</a> )
Background:	Synonyms: Keratin, type I cytoskeletal 10, Cytokeratin-10, CK-10, K10

## Target Details

---

NCBI Gene Symbol: KRT10

Molecular Weight: 59 kDa

Gene ID: 3858

OMIM: 113800

UniProt: [P13645](#)

## Application Details

---

Application Notes: WB: 1:500~1:1000 IF: 1:100~1:500 ELISA: 1:5000

Comment: Unigene-Number: Hs.99936 (NCBI Gene Symbol: KRT10)

Restrictions: For Research Use only

## Handling

---

Format: Liquid

Concentration: 1 mg/mL

Buffer: phosphate buffered saline (without Mg<sup>2+</sup> and Ca<sup>2+</sup>), pH 7.4, 150 mM NaCl, 0.02 % sodium azide and 50 % glycerol.

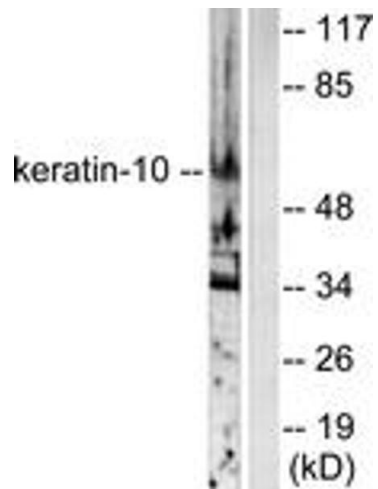
Preservative: Sodium azide

Precaution of Use: This product contains sodium azide: a POISONOUS AND HAZARDOUS SUBSTANCE which should be handled by trained staff only.

Storage: -20 °C

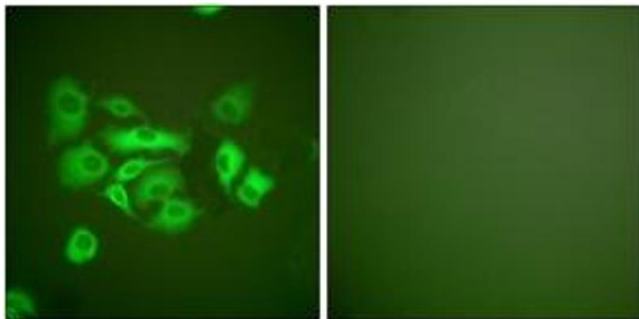
Storage Comment: Stable at -20°C for at least 1 year.

Expiry Date: 12 months



### Western Blotting

**Image 1.** Western blot analysis of extracts from HeLa cells, using Keratin 10 Antibody. The lane on the right is treated with the synthesized peptide.



### Immunofluorescence

**Image 2.** Immunofluorescence analysis of A549 cells, using Keratin 10 Antibody. The picture on the right is treated with the synthesized peptide.