

Datasheet for ABIN1533335
anti-Mammaglobin antibody (AA 41-90)[Go to Product page](#)

3 Images

Overview

Quantity:	100 µg
Target:	Mammaglobin
Binding Specificity:	AA 41-90
Reactivity:	Human, Rat
Host:	Rabbit
Clonality:	Polyclonal
Conjugate:	This Mammaglobin antibody is un-conjugated
Application:	Immunohistochemistry (IHC), ELISA, Western Blotting (WB), Immunofluorescence (IF)

Product Details

Immunogen:	The antiserum was produced against synthesized peptide derived from human Mammaglobin.
Isotype:	IgG
Specificity:	Mammaglobin Antibody detects endogenous levels of total Mammaglobin protein.
Purification:	The antibody was purified from rabbit antiserum by affinity-chromatography using immunogen.
Purity:	> 95 %

Target Details

Target:	Mammaglobin
Abstract:	Mammaglobin Products
Background:	Synonyms: Mammaglobin-A, Mammaglobin-1, Secretoglobin family 2A member 2, SCGB2A2,

Target Details

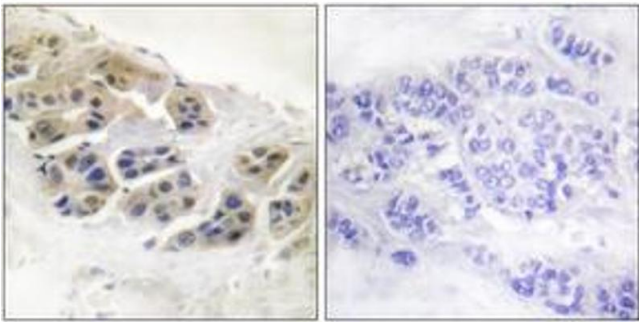
	MGB1, UGB2
	NCBI Gene Symbol: SCGB2A2
Molecular Weight:	10 kDa
Gene ID:	4250
OMIM:	605562
UniProt:	Q13296

Application Details

Application Notes:	WB: 1:500~1:1000 IHC: 1:50~1:100 IF: 1:100~1:500 ELISA: 1:1000
Comment:	Unigene-Number: Hs.46452 (NCBI Gene Symbol: SCGB2A2)
Restrictions:	For Research Use only

Handling

Format:	Liquid
Concentration:	1 mg/mL
Buffer:	phosphate buffered saline (without Mg ²⁺ and Ca ²⁺), pH 7.4, 150 mM NaCl, 0.02 % sodium azide and 50 % glycerol.
Preservative:	Sodium azide
Precaution of Use:	This product contains sodium azide: a POISONOUS AND HAZARDOUS SUBSTANCE which should be handled by trained staff only.
Storage:	-20 °C
Storage Comment:	Stable at -20°C for at least 1 year.
Expiry Date:	12 months



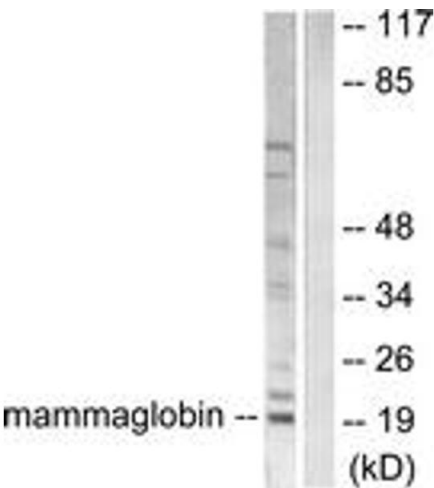
Immunohistochemistry

Image 1. Immunohistochemistry analysis of paraffin-embedded human breast carcinoma tissue, using Mammaglobin Antibody. The picture on the right is treated with the synthesized peptide.



Immunofluorescence

Image 2. Immunofluorescence analysis of HepG2 cells, using Mammaglobin Antibody. The picture on the right is treated with the synthesized peptide.



Western Blotting

Image 3. Western blot analysis of extracts from HepG2 cells, using Mammaglobin Antibody. The lane on the right is treated with the synthesized peptide.