

Datasheet for ABIN1533339  
**anti-MCM2 antibody (AA 1-50)**



[Go to Product page](#)

3 Images

## Overview

|                      |   |
|----------------------|---|
| Quantity:            | 100 µL  |
| Target:              | MCM2  |
| Binding Specificity: | AA 1-50   |
| Reactivity:          | Human, Mouse  |
| Host:                | Rabbit  |
| Clonality:           | Polyclonal  |
| Conjugate:           | This MCM2 antibody is un-conjugated   |
| Application:         | Western Blotting (WB), Immunohistochemistry (IHC), ELISA, Immunofluorescence (IF) |

## Product Details

|               |   |
|---------------|---|
| Immunogen:    | The antiserum was produced against synthesized peptide derived from human MCM2.             |
| Isotype:      | IgG   |
| Specificity:  | MCM2 Antibody detects endogenous levels of total MCM2 protein.                              |
| Purification: | The antibody was purified from rabbit antiserum by affinity-chromatography using immunogen. |
| Purity:       | > 95 %  |

## Target Details

|                   |  |
|-------------------|--|
| Target:           | MCM2   |
| Alternative Name: | MCM2 ( <a href="#">MCM2 Products</a> )   |
| Background:       | Synonyms: BM28, CDCL1, DNA replication licensing factor MCM2, KIAA0030, MCMD2, Nuclear |

## Target Details

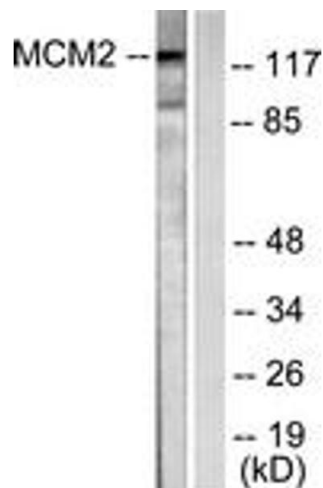
|                   |   |
|-------------------|---|
|                   | protein BM28<br>NCBI Gene Symbol: MCM2  |
| Molecular Weight: | 101 kDa   |
| Gene ID:          | 4171  |
| OMIM:             | 116945  |
| UniProt:          | <a href="#">P49736</a>  |
| Pathways:         | <a href="#">DNA Damage Repair</a> , <a href="#">Mitotic G1-G1/S Phases</a> , <a href="#">DNA Replication</a> , <a href="#">Chromatin Binding</a> , <a href="#">Synthesis of DNA</a> |

## Application Details

|                    |   |
|--------------------|---|
| Application Notes: | WB: 1:500~1:1000 IHC: 1:50~1:100 IF: 1:100~1:500 ELISA: 1:40000 |
| Comment:           | Unigene-Number: Hs.477481 (NCBI Gene Symbol: MCM2)              |
| Restrictions:      | For Research Use only   |

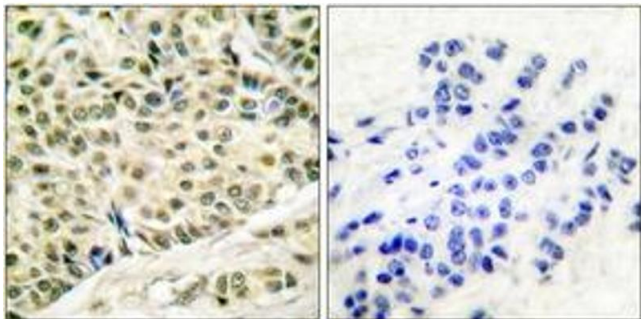
## Handling

|                    |   |
|--------------------|---|
| Format:            | Liquid  |
| Concentration:     | 1 mg/mL   |
| Buffer:            | phosphate buffered saline (without Mg <sup>2+</sup> and Ca <sup>2+</sup> ), pH 7.4, 150 mM NaCl, 0.02 % sodium azide and 50 % glycerol. |
| Preservative:      | Sodium azide  |
| Precaution of Use: | This product contains sodium azide: a POISONOUS AND HAZARDOUS SUBSTANCE which should be handled by trained staff only.                  |
| Storage:           | -20 °C  |
| Storage Comment:   | Stable at -20°C for at least 1 year.  |
| Expiry Date:       | 12 months   |



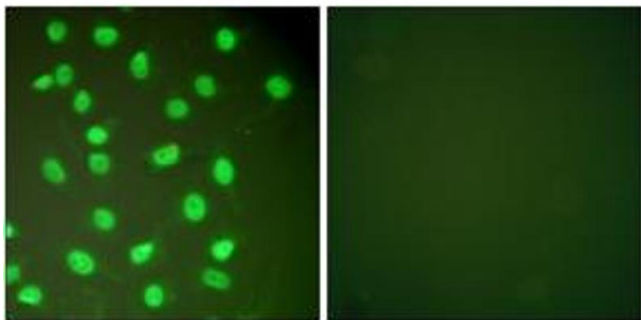
#### Western Blotting

**Image 1.** Western blot analysis of extracts from 293 cells, using MCM2 Antibody. The lane on the right is treated with the synthesized peptide.



#### Immunohistochemistry

**Image 2.** Immunohistochemistry analysis of paraffin-embedded human breast carcinoma tissue, using MCM2 Antibody. The picture on the right is treated with the synthesized peptide.



#### Immunofluorescence

**Image 3.** Immunofluorescence analysis of HepG2 cells, using MCM2 Antibody. The picture on the right is treated with the synthesized peptide.