

Datasheet for ABIN1533340
anti-MCM5 antibody (AA 21-70)

3 Images

[Go to Product page](#)

Overview

Quantity:	100 µg
Target:	MCM5
Binding Specificity:	AA 21-70
Reactivity:	Human, Mouse, Rat
Host:	Rabbit
Clonality:	Polyclonal
Conjugate:	This MCM5 antibody is un-conjugated
Application:	Western Blotting (WB), Immunohistochemistry (IHC), Immunofluorescence (IF), ELISA

Product Details

Immunogen:	The antiserum was produced against synthesized peptide derived from human MCM5.
Isotype:	IgG
Specificity:	MCM5 Antibody detects endogenous levels of total MCM5 protein.
Purification:	The antibody was purified from rabbit antiserum by affinity-chromatography using immunogen.
Purity:	> 95 %

Target Details

Target:	MCM5
Alternative Name:	MCM5 (MCM5 Products)
Background:	Synonyms: CDC46, DNA replication licensing factor MCM5, minichromosome maintenance

Target Details

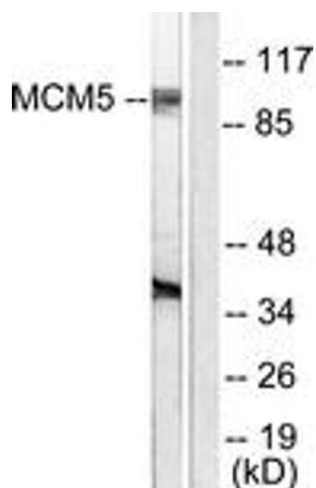
	deficient protein 5 NCBI Gene Symbol: MCM5
Molecular Weight:	82 kDa
Gene ID:	4174
OMIM:	602696
UniProt:	P33992
Pathways:	DNA Damage Repair , Mitotic G1-G1/S Phases , DNA Replication , Chromatin Binding , Synthesis of DNA

Application Details

Application Notes:	WB: 1:500~1:1000 IHC: 1:50~1:100 IF: 1:100~1:500 ELISA: 1:20000
Comment:	Unigene-Number: Hs.517582 (NCBI Gene Symbol: MCM5)
Restrictions:	For Research Use only

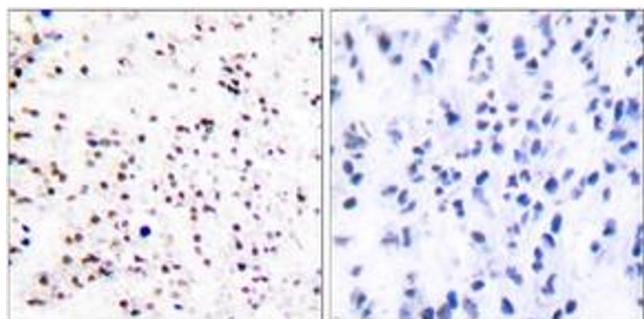
Handling

Format:	Liquid
Concentration:	1 mg/mL
Buffer:	phosphate buffered saline (without Mg ²⁺ and Ca ²⁺), pH 7.4, 150 mM NaCl, 0.02 % sodium azide and 50 % glycerol.
Preservative:	Sodium azide
Precaution of Use:	This product contains sodium azide: a POISONOUS AND HAZARDOUS SUBSTANCE which should be handled by trained staff only.
Storage:	-20 °C
Storage Comment:	Stable at -20°C for at least 1 year.
Expiry Date:	12 months



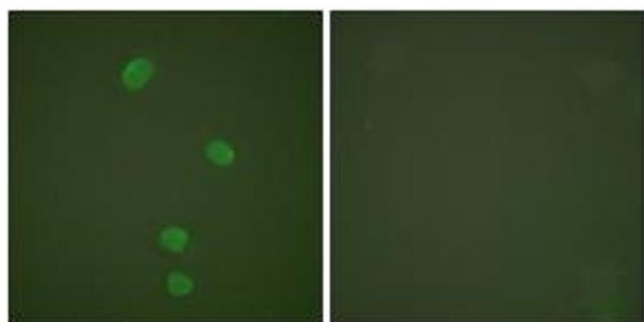
Western Blotting

Image 1. Western blot analysis of extracts from HepG2 cells, using MCM5 Antibody. The lane on the right is treated with the synthesized peptide.



Immunohistochemistry

Image 2. Immunohistochemistry analysis of paraffin-embedded human tonsil tissue, using MCM5 Antibody. The picture on the right is treated with the synthesized peptide.



Immunofluorescence

Image 3. Immunofluorescence analysis of HepG2 cells, using MCM5 Antibody. The picture on the right is treated with the synthesized peptide.