



[Go to Product page](#)

Datasheet for ABIN1533343
anti-MMP10 antibody (AA 361-410)

2 Images

Overview

Quantity:	100 µg
Target:	MMP10
Binding Specificity:	AA 361-410
Reactivity:	Human, Mouse, Rat
Host:	Rabbit
Clonality:	Polyclonal
Conjugate:	This MMP10 antibody is un-conjugated
Application:	Immunohistochemistry (IHC), ELISA, Immunofluorescence (IF)

Product Details

Immunogen:	The antiserum was produced against synthesized peptide derived from human MMP-10.
Isotype:	IgG
Specificity:	MMP-10 Antibody detects endogenous levels of total MMP-10 protein.
Purification:	The antibody was purified from rabbit antiserum by affinity-chromatography using immunogen.
Purity:	> 95 %

Target Details

Target:	MMP10
Alternative Name:	MMP-10 (MMP10 Products)
Background:	Synonyms: STMY2, STROMELYSIN II, matrix metalloproteinase 10 (stromelysin 2)

Target Details

NCBI Gene Symbol: MMP10

Molecular Weight: 54 kDa

Gene ID: 4319

OMIM: 185260

UniProt: [P09238](#)

Application Details

Application Notes: IHC: 1:50~1:100 IF: 1:100~1:500 ELISA: 1:10000

Comment: Unigene-Number: Hs.2258 (NCBI Gene Symbol: MMP10)

Restrictions: For Research Use only

Handling

Format: Liquid

Concentration: 1 mg/mL

Buffer: phosphate buffered saline (without Mg²⁺ and Ca²⁺), pH 7.4, 150 mM NaCl, 0.02 % sodium azide and 50 % glycerol.

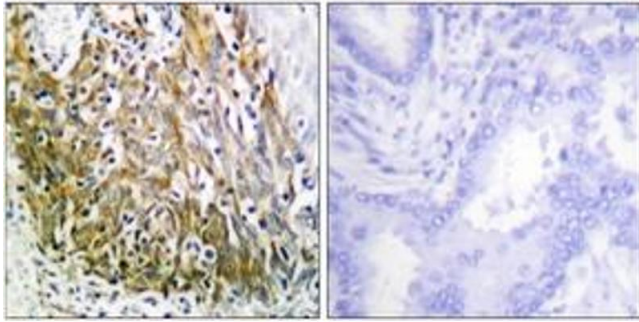
Preservative: Sodium azide

Precaution of Use: This product contains sodium azide: a POISONOUS AND HAZARDOUS SUBSTANCE which should be handled by trained staff only.

Storage: -20 °C

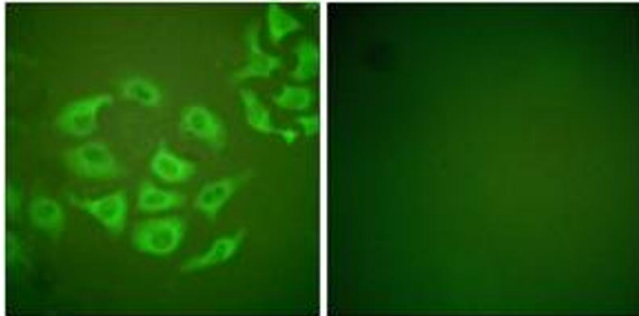
Storage Comment: Stable at -20°C for at least 1 year.

Expiry Date: 12 months



Immunohistochemistry

Image 1. Immunohistochemistry analysis of paraffin-embedded human lung carcinoma tissue, using MMP-10 Antibody. The picture on the right is treated with the synthesized peptide.



Immunofluorescence

Image 2. Immunofluorescence analysis of HepG2 cells, using MMP-10 Antibody. The picture on the right is treated with the synthesized peptide.