

Datasheet for ABIN1533363  
**anti-SLC22A8 antibody (AA 191-240)**

## 2 Images

[Go to Product page](#)

## Overview

Quantity:	100 µg
Target:	SLC22A8
Binding Specificity:	AA 191-240
Reactivity:	Human, Rat, Mouse
Host:	Rabbit
Clonality:	Polyclonal
Conjugate:	This SLC22A8 antibody is un-conjugated
Application:	Western Blotting (WB), Immunohistochemistry (IHC), ELISA

## Product Details

Immunogen:	The antiserum was produced against synthesized peptide derived from human OCT3.
Isotype:	IgG
Specificity:	OCT3 Antibody detects endogenous levels of total OCT3 protein.
Purification:	The antibody was purified from rabbit antiserum by affinity-chromatography using immunogen.
Purity:	> 95 %

## Target Details

Target:	SLC22A8
Alternative Name:	OCT3 ( <a href="#">SLC22A8 Products</a> )
Background:	Synonyms: OCT3, OCT4, OTF3, OTF4, OCTAMER-BINDING TRANSCRIPTION FACTOR 3,

## Target Details

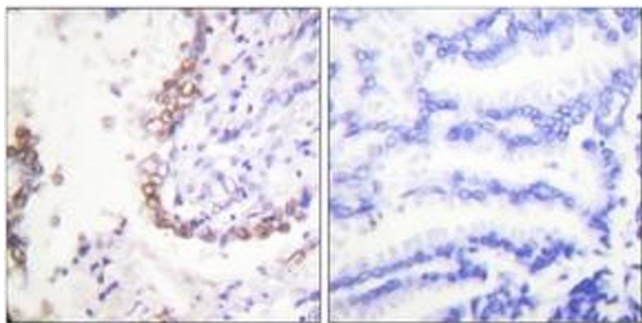
	OCTAMER-BINDING TRANSCRIPTION FACTOR 4 NCBI Gene Symbol: POU5F1
Molecular Weight:	38 kDa
Gene ID:	5460
OMIM:	164177
UniProt:	<a href="#">Q01860</a>

## Application Details

Application Notes:	WB: 1:500~1:1000 IHC: 1:50~1:100 ELISA: 1:10000
Comment:	Unigene-Number: Hs.249184, Hs.632482, Hs.646545 (NCBI Gene Symbol: POU5F1)
Restrictions:	For Research Use only

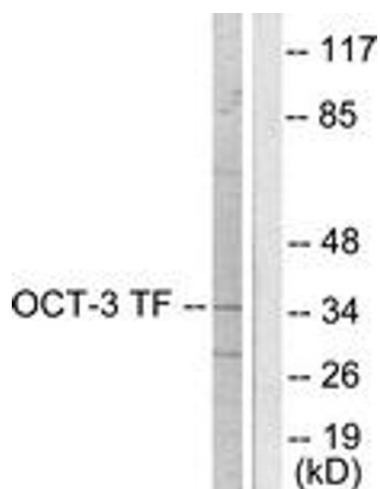
## Handling

Format:	Liquid
Concentration:	1 mg/mL
Buffer:	phosphate buffered saline (without Mg <sup>2+</sup> and Ca <sup>2+</sup> ), pH 7.4, 150 mM NaCl, 0.02 % sodium azide and 50 % glycerol.
Preservative:	Sodium azide
Precaution of Use:	This product contains sodium azide: a POISONOUS AND HAZARDOUS SUBSTANCE which should be handled by trained staff only.
Storage:	-20 °C
Storage Comment:	Stable at -20°C for at least 1 year.
Expiry Date:	12 months



### Immunohistochemistry

**Image 1.** Immunohistochemistry analysis of paraffin-embedded human lung carcinoma tissue, using OCT3 Antibody. The picture on the right is treated with the synthesized peptide.



### Western Blotting

**Image 2.** Western blot analysis of extracts from HeLa cells, using OCT3 Antibody. The lane on the right is treated with the synthesized peptide.