

Datasheet for ABIN1533367  
**anti-p300 antibody (AA 1-50)**

2 Images



[Go to Product page](#)

## Overview

Quantity:	100 µL
Target:	p300 (EP300)
Binding Specificity:	AA 1-50
Reactivity:	Human
Host:	Rabbit
Clonality:	Polyclonal
Conjugate:	This p300 antibody is un-conjugated
Application:	Western Blotting (WB), Immunohistochemistry (IHC), ELISA

## Product Details

Immunogen:	The antiserum was produced against synthesized peptide derived from human p300.
Isotype:	IgG
Specificity:	p300 Antibody detects endogenous levels of total p300 protein.
Purification:	The antibody was purified from rabbit antiserum by affinity-chromatography using immunogen.
Purity:	> 95 %

## Target Details

Target:	p300 (EP300)
Alternative Name:	p300 ( <a href="#">EP300 Products</a> )
Background:	Synonyms: E1A-associated protein p300, EP300, P300 transcription coactivator homolog

## Target Details

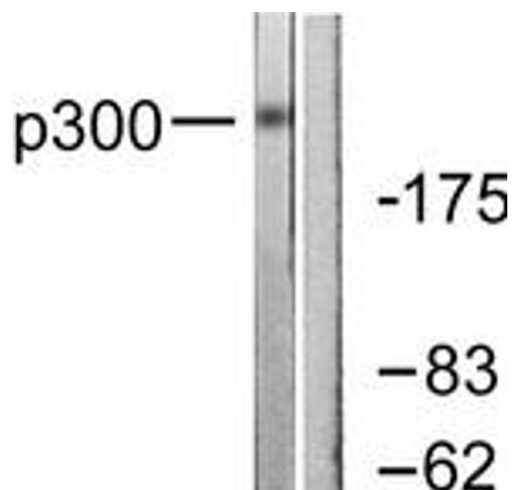
	NCBI Gene Symbol: EP300
Molecular Weight:	264 kDa
Gene ID:	2033
OMIM:	602700
UniProt:	<a href="#">Q09472</a>
Pathways:	<a href="#">p53 Signaling</a> , <a href="#">Notch Signaling</a> , <a href="#">Interferon-gamma Pathway</a> , <a href="#">Intracellular Steroid Hormone Receptor Signaling Pathway</a> , <a href="#">Regulation of Intracellular Steroid Hormone Receptor Signaling</a> , <a href="#">Regulation of Lipid Metabolism by PPARalpha</a> , <a href="#">Regulation of Muscle Cell Differentiation</a> , <a href="#">Regulation of Cell Size</a>

## Application Details

Application Notes:	WB: 1:500~1:1000 IHC: 1:50~1:100 ELISA: 1:10000
Comment:	Unigene-Number: Hs.517517, Hs.655211 (NCBI Gene Symbol: EP300)
Restrictions:	For Research Use only

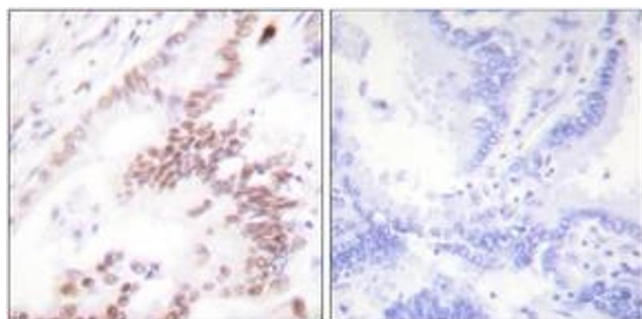
## Handling

Format:	Liquid
Concentration:	1 mg/mL
Buffer:	phosphate buffered saline (without Mg <sup>2+</sup> and Ca <sup>2+</sup> ), pH 7.4, 150 mM NaCl, 0.02 % sodium azide and 50 % glycerol.
Preservative:	Sodium azide
Precaution of Use:	This product contains sodium azide: a POISONOUS AND HAZARDOUS SUBSTANCE which should be handled by trained staff only.
Storage:	-20 °C
Storage Comment:	Stable at -20°C for at least 1 year.
Expiry Date:	12 months



#### Western Blotting

**Image 1.** Western blot analysis of extracts from MDA-MB-435 cells, using p300 Antibody. The lane on the right is treated with the synthesized peptide.



#### Immunohistochemistry

**Image 2.** Immunohistochemistry analysis of paraffin-embedded human lung carcinoma tissue, using p300 Antibody. The picture on the right is treated with the synthesized peptide.