

Datasheet for ABIN1533368
anti-KAT2B antibody (AA 783-832)



[Go to Product page](#)

2 Images

Overview

Quantity:	100 µL
Target:	KAT2B
Binding Specificity:	AA 783-832
Reactivity:	Human, Mouse, Rat
Host:	Rabbit
Clonality:	Polyclonal
Conjugate:	This KAT2B antibody is un-conjugated
Application:	Western Blotting (WB), ELISA, Immunohistochemistry (IHC)

Product Details

Immunogen:	The antiserum was produced against synthesized peptide derived from human p300/CBP.
Isotype:	IgG
Specificity:	p300/CBP Antibody detects endogenous levels of total p300/CBP protein.
Purification:	The antibody was purified from rabbit antiserum by affinity-chromatography using immunogen.
Purity:	> 95 %

Target Details

Target:	KAT2B
Alternative Name:	KAT2B (KAT2B Products)
Background:	Synonyms: CREB-binding protein, CREBBP E1A-associated protein p300, EP300, P300

Target Details

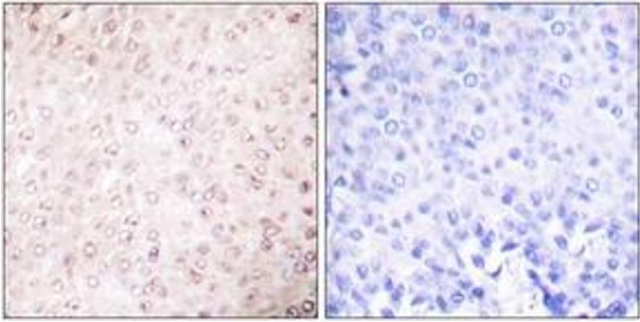
	transcription coactivator homolog NCBI Gene Symbol: KAT2B
Molecular Weight:	93 kDa
Gene ID:	8850
OMIM:	602303
UniProt:	Q92831
Pathways:	p53 Signaling , Regulation of Carbohydrate Metabolic Process

Application Details

Application Notes:	WB: 1:500~1:1000 IHC: 1:50~1:100 ELISA: 1:10000
Comment:	Unigene-Number: Hs.533055 (NCBI Gene Symbol: KAT2B)
Restrictions:	For Research Use only

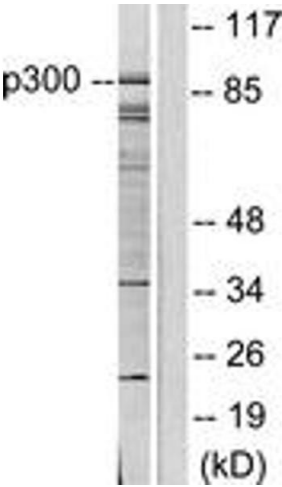
Handling

Format:	Liquid
Concentration:	1 mg/mL
Buffer:	phosphate buffered saline (without Mg ²⁺ and Ca ²⁺), pH 7.4, 150 mM NaCl, 0.02 % sodium azide and 50 % glycerol.
Preservative:	Sodium azide
Precaution of Use:	This product contains sodium azide: a POISONOUS AND HAZARDOUS SUBSTANCE which should be handled by trained staff only.
Storage:	-20 °C
Storage Comment:	Stable at -20°C for at least 1 year.
Expiry Date:	12 months



Immunohistochemistry (Paraffin-embedded Sections)

Image 1. Immunohistochemistry analysis of paraffin-embedded human breast carcinoma tissue, using p300/CBP Antibody. The picture on the right is treated with the synthesized peptide.



Western Blotting

Image 2. Western blot analysis of extracts from COLO205 cells, using p300/CBP Antibody. The lane on the right is treated with the synthesized peptide.