



[Go to Product page](#)

Datasheet for ABIN1533373

anti-Cyclin L1 antibody (AA 461-510)

2 Images

Overview

| | |
|----------------------|--|
| Quantity: | 100 µg |
| Target: | Cyclin L1 (CCNL1) |
| Binding Specificity: | AA 461-510 |
| Reactivity: | Human, Mouse, Rat |
| Host: | Rabbit |
| Clonality: | Polyclonal |
| Conjugate: | This Cyclin L1 antibody is un-conjugated |
| Application: | Western Blotting (WB), ELISA, Immunohistochemistry (IHC) |

Product Details

| | |
|---------------|---|
| Immunogen: | The antiserum was produced against synthesized peptide derived from human Cyclin L1. |
| Isotype: | IgG |
| Specificity: | Cyclin L1 Antibody detects endogenous levels of total Cyclin L1 protein. |
| Purification: | The antibody was purified from rabbit antiserum by affinity-chromatography using immunogen. |
| Purity: | > 95 % |

Target Details

| | |
|-------------------|---|
| Target: | Cyclin L1 (CCNL1) |
| Alternative Name: | Cyclin L1 (CCNL1 Products) |
| Background: | Synonyms: ADP-ribosyltransferase 1, ADPRT, ADPRT1, PARP, PARP-1, PPOL, pADPRT-1, poly |

Target Details

(ADP-ribose) pol, poly [ADP-ribose] polymerase 1, poly[ADP-ribose] synthetase 1

NCBI Gene Symbol: CCNL1

Molecular Weight: 59 kDa

Gene ID: 57018

UniProt: [Q9UK58](#)

Application Details

Application Notes: WB: 1:500~1:1000 IHC: 1:50~1:100 ELISA: 1:10000

Comment: Unigene-Number: Hs.4859 (NCBI Gene Symbol: CCNL1)

Restrictions: For Research Use only

Handling

Format: Liquid

Concentration: 1 mg/mL

Buffer: phosphate buffered saline (without Mg²⁺ and Ca²⁺), pH 7.4, 150 mM NaCl, 0.02 % sodium azide and 50 % glycerol.

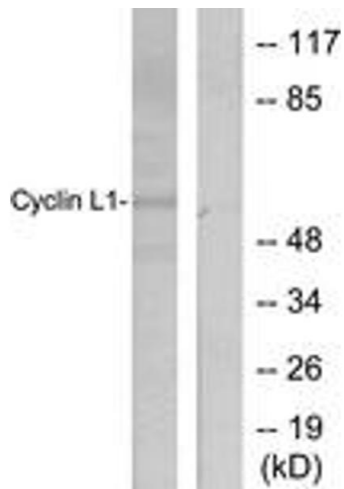
Preservative: Sodium azide

Precaution of Use: This product contains sodium azide: a POISONOUS AND HAZARDOUS SUBSTANCE which should be handled by trained staff only.

Storage: -20 °C

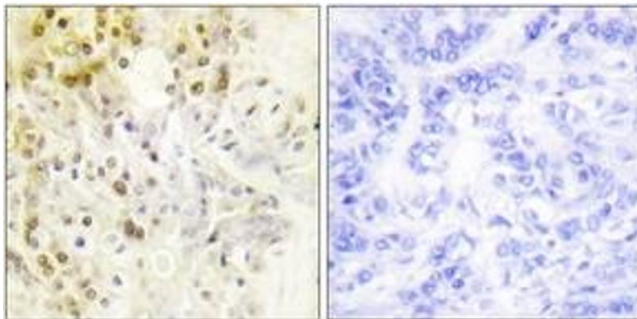
Storage Comment: Stable at -20°C for at least 1 year.

Expiry Date: 12 months



Western Blotting

Image 1. Western blot analysis of extracts from HepG2 cells, using Cyclin L1 Antibody. The lane on the right is treated with the synthesized peptide.



Immunohistochemistry

Image 2. Immunohistochemistry analysis of paraffin-embedded human breast carcinoma tissue, using Cyclin L1 Antibody. The picture on the right is treated with the synthesized peptide.