

Datasheet for ABIN1533374

anti-Patched 1 antibody (AA 1-50)**2** Images[Go to Product page](#)

Overview

Quantity:	100 µL
Target:	Patched 1 (PTCH1)
Binding Specificity:	AA 1-50
Reactivity:	Human, Mouse
Host:	Rabbit
Clonality:	Polyclonal
Application:	Western Blotting (WB), ELISA, Immunohistochemistry (IHC)

Product Details

Immunogen:	The antiserum was produced against synthesized peptide derived from human Patched.
Isotype:	IgG
Specificity:	Patched Antibody detects endogenous levels of total Patched protein.
Purification:	The antibody was purified from rabbit antiserum by affinity-chromatography using immunogen.
Purity:	> 95 %

Target Details

Target:	Patched 1 (PTCH1)
Alternative Name:	Patched (PTCH1 Products)
Background:	Synonyms: Protein patched homolog 1, PTC1, PTC, PTCH1, PTCH NCBI Gene Symbol: PTCH1

Target Details

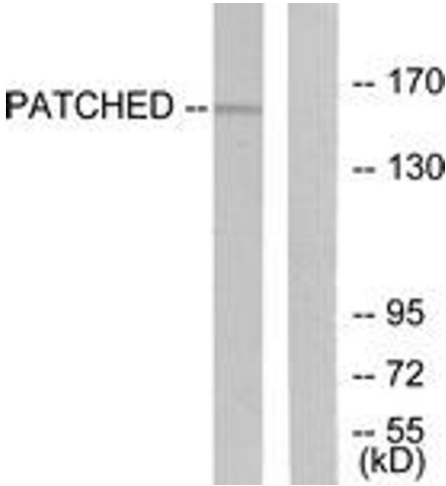
Molecular Weight:	160 kDa
Gene ID:	5727
OMIM:	601309
UniProt:	Q13635
Pathways:	Hedgehog Signaling , Carbohydrate Homeostasis , Tube Formation

Application Details

Application Notes:	WB: 1:500~1:1000 IHC: 1:50~1:100 ELISA: 1:10000
Comment:	Unigene-Number: Hs.494538, Hs.638946 (NCBI Gene Symbol: PTCH1)
Restrictions:	For Research Use only

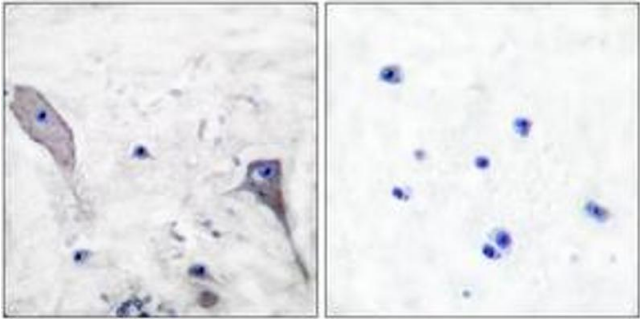
Handling

Format:	Liquid
Concentration:	1 mg/mL
Buffer:	phosphate buffered saline (without Mg ²⁺ and Ca ²⁺), pH 7.4, 150 mM NaCl, 0.02 % sodium azide and 50 % glycerol.
Preservative:	Sodium azide
Precaution of Use:	This product contains sodium azide: a POISONOUS AND HAZARDOUS SUBSTANCE which should be handled by trained staff only.
Storage:	-20 °C
Storage Comment:	Stable at -20°C for at least 1 year.
Expiry Date:	12 months



Western Blotting

Image 1. Western blot analysis of extracts from mouse muscle cells, using Patched Antibody. The lane on the right is treated with the synthesized peptide.



Immunohistochemistry

Image 2. Immunohistochemistry analysis of paraffin-embedded human brain tissue, using Patched Antibody. The picture on the right is treated with the synthesized peptide.