

Datasheet for ABIN1533381
anti-PML antibody (AA 11-60)[Go to Product page](#)

3 Images

Overview

Quantity:	100 µg
Target:	PML
Binding Specificity:	AA 11-60
Reactivity:	Human
Host:	Rabbit
Clonality:	Polyclonal
Conjugate:	This PML antibody is un-conjugated
Application:	Western Blotting (WB), Immunohistochemistry (IHC), Immunofluorescence (IF), ELISA

Product Details

Immunogen:	The antiserum was produced against synthesized peptide derived from human PML.
Isotype:	IgG
Specificity:	PML Antibody detects endogenous levels of total PML protein.
Purification:	The antibody was purified from rabbit antiserum by affinity-chromatography using immunogen.
Purity:	> 95 %

Target Details

Target:	PML
Alternative Name:	PML (PML Products)
Background:	Synonyms: MYL, Probable transcription factor PML, TRIM19, Tripartite motif protein 19

Target Details

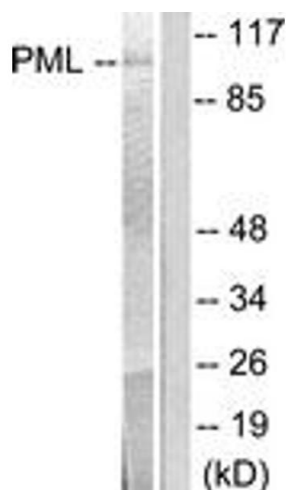
	NCBI Gene Symbol: PML
Molecular Weight:	97 kDa
Gene ID:	5371
OMIM:	102578
UniProt:	P29590
Pathways:	p53 Signaling , Retinoic Acid Receptor Signaling Pathway , Maintenance of Protein Location , Positive Regulation of Endopeptidase Activity , Protein targeting to Nucleus

Application Details

Application Notes:	WB: 1:500~1:1000 IHC: 1:50~1:100 IF: 1:100~1:500 ELISA: 1:10000
Comment:	Unigene-Number: Hs.526464 (NCBI Gene Symbol: PML)
Restrictions:	For Research Use only

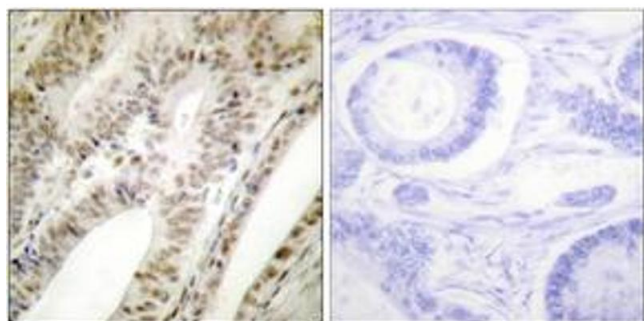
Handling

Format:	Liquid
Concentration:	1 mg/mL
Buffer:	phosphate buffered saline (without Mg ²⁺ and Ca ²⁺), pH 7.4, 150 mM NaCl, 0.02 % sodium azide and 50 % glycerol.
Preservative:	Sodium azide
Precaution of Use:	This product contains sodium azide: a POISONOUS AND HAZARDOUS SUBSTANCE which should be handled by trained staff only.
Storage:	-20 °C
Storage Comment:	Stable at -20°C for at least 1 year.
Expiry Date:	12 months



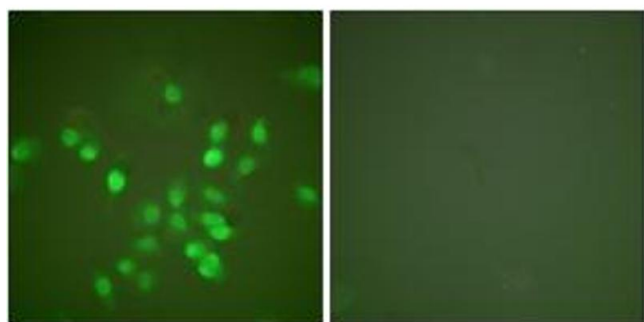
Western Blotting

Image 1. Western blot analysis of extracts from A549 cells, using PML Antibody. The lane on the right is treated with the synthesized peptide.



Immunohistochemistry

Image 2. Immunohistochemistry analysis of paraffin-embedded human tonsil tissue, using PML Antibody. The picture on the right is treated with the synthesized peptide.



Immunofluorescence

Image 3. Immunofluorescence analysis of A549 cells, using PML Antibody. The picture on the right is treated with the synthesized peptide.