



[Go to Product page](#)

Datasheet for ABIN1533382
anti-PMP22 antibody (AA 111-160)

2 Images

Overview

Quantity:	100 µg
Target:	PMP22
Binding Specificity:	AA 111-160
Reactivity:	Human, Rat, Mouse
Host:	Rabbit
Clonality:	Polyclonal
Conjugate:	This PMP22 antibody is un-conjugated
Application:	Western Blotting (WB), Immunohistochemistry (IHC), ELISA

Product Details

Immunogen:	The antiserum was produced against synthesized peptide derived from human PMP22.
Isotype:	IgG
Specificity:	PMP22 Antibody detects endogenous levels of total PMP22 protein.
Purification:	The antibody was purified from rabbit antiserum by affinity-chromatography using immunogen.
Purity:	> 95 %

Target Details

Target:	PMP22
Alternative Name:	PMP22 (PMP22 Products)
Background:	Synonyms: GAS3, GROWTH ARREST-SPECIFIC 3

Target Details

NCBI Gene Symbol: PMP22

Molecular Weight: 17 kDa

Gene ID: 5376

OMIM: 601097

UniProt: [Q01453](#)

Application Details

Application Notes: WB: 1:500~1:1000 IHC: 1:50~1:100 ELISA: 1:40000

Comment: Unigene-Number: Hs.372031 (NCBI Gene Symbol: PMP22)

Restrictions: For Research Use only

Handling

Format: Liquid

Concentration: 1 mg/mL

Buffer: phosphate buffered saline (without Mg²⁺ and Ca²⁺), pH 7.4, 150 mM NaCl, 0.02 % sodium azide and 50 % glycerol.

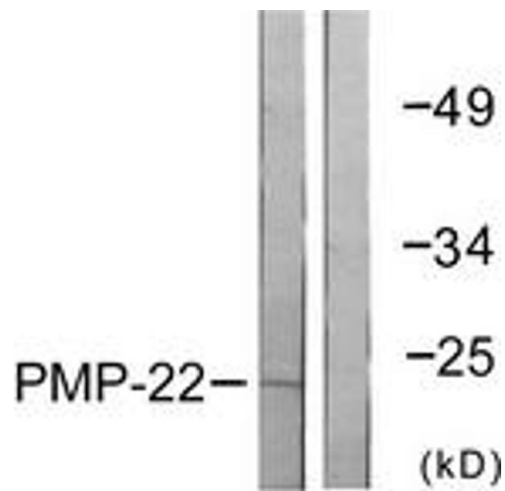
Preservative: Sodium azide

Precaution of Use: This product contains sodium azide: a POISONOUS AND HAZARDOUS SUBSTANCE which should be handled by trained staff only.

Storage: -20 °C

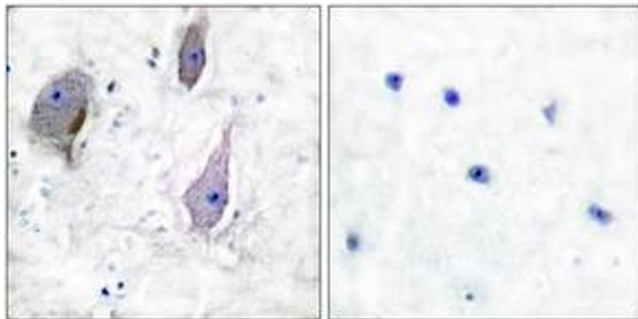
Storage Comment: Stable at -20°C for at least 1 year.

Expiry Date: 12 months



Western Blotting

Image 1. Western blot analysis of extracts from MDA-MB-435 cells, using PMP22 Antibody. The lane on the right is treated with the synthesized peptide.



Immunohistochemistry

Image 2. Immunohistochemistry analysis of paraffin-embedded human brain tissue, using PMP22 Antibody. The picture on the right is treated with the synthesized peptide.