

Datasheet for ABIN1533385
anti-PAWR antibody (AA 291-340)[Go to Product page](#)

2 Images

Overview

Quantity:	100 µg
Target:	PAWR
Binding Specificity:	AA 291-340
Reactivity:	Human, Mouse, Rat
Host:	Rabbit
Clonality:	Polyclonal
Conjugate:	This PAWR antibody is un-conjugated
Application:	Western Blotting (WB), Immunohistochemistry (IHC), ELISA

Product Details

Immunogen:	The antiserum was produced against synthesized peptide derived from human Prostate Apoptosis Response protein-4.
Isotype:	IgG
Specificity:	Prostate Apoptosis Response protein-4 Antibody detects endogenous levels of total Prostate Apoptosis Response protein-4 protein.
Purification:	The antibody was purified from rabbit antiserum by affinity-chromatography using immunogen.
Purity:	> 95 %

Target Details

Target:	PAWR
---------	------

Target Details

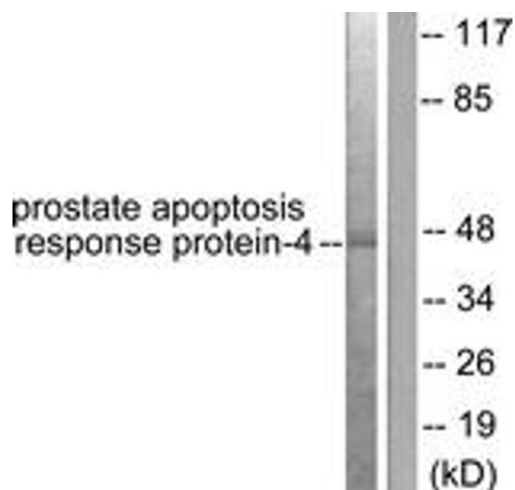
Alternative Name:	Prostate Apoptosis Response Protein-4 (PAWR Products)
Background:	Synonyms: Par-4, PAR4, PRKC apoptosis WT1 regulator protein, PRKC, apoptosis, WT1, regulator, prostate apoptosis response protein 4, prostate apoptosis response protein PAR-4, prostate apoptosis response-4 protein, transcriptional repressor PAR4, WT1-interacting pr NCBI Gene Symbol: PAWR
Molecular Weight:	36 kDa
Gene ID:	5074
OMIM:	601936
UniProt:	Q96LZ0

Application Details

Application Notes:	WB: 1:500~1:1000 IHC: 1:50~1:100 ELISA: 1:10000
Comment:	Unigene-Number: Hs.643130 (NCBI Gene Symbol: PAWR)
Restrictions:	For Research Use only

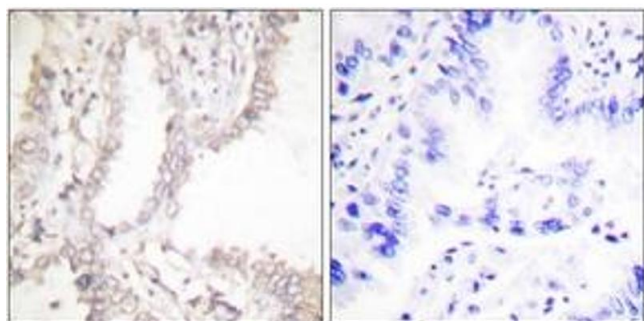
Handling

Format:	Liquid
Concentration:	1 mg/mL
Buffer:	phosphate buffered saline (without Mg ²⁺ and Ca ²⁺), pH 7.4, 150 mM NaCl, 0.02 % sodium azide and 50 % glycerol.
Preservative:	Sodium azide
Precaution of Use:	This product contains sodium azide: a POISONOUS AND HAZARDOUS SUBSTANCE which should be handled by trained staff only.
Storage:	-20 °C
Storage Comment:	Stable at -20°C for at least 1 year.
Expiry Date:	12 months



Western Blotting

Image 1. Western blot analysis of extracts from NIH-3T3 cells, using Prostate Apoptosis Response protein-4 Antibody. The lane on the right is treated with the synthesized peptide.



Immunohistochemistry

Image 2. Immunohistochemistry analysis of paraffin-embedded human lung carcinoma tissue, using Prostate Apoptosis Response protein-4 Antibody. The picture on the right is treated with the synthesized peptide.