

Datasheet for ABIN1533394
anti-S100A1 antibody (AA 10-59)

3 Images

[Go to Product page](#)

Overview

Quantity:	100 µg
Target:	S100A1
Binding Specificity:	AA 10-59
Reactivity:	Human, Mouse, Rat
Host:	Rabbit
Clonality:	Polyclonal
Conjugate:	This S100A1 antibody is un-conjugated
Application:	Western Blotting (WB), Immunohistochemistry (IHC), ELISA, Immunofluorescence (IF)

Product Details

Immunogen:	The antiserum was produced against synthesized peptide derived from human S100 A1.
Isotype:	IgG
Specificity:	S100 A1 Antibody detects endogenous levels of total S100 A1 protein.
Purification:	The antibody was purified from rabbit antiserum by affinity-chromatography using immunogen.
Purity:	> 95 %

Target Details

Target:	S100A1
Alternative Name:	S100 A1 (S100A1 Products)
Background:	Synonyms: S100-ALPHA, S100 CALCIUM-BINDING PROTEIN A1

Target Details

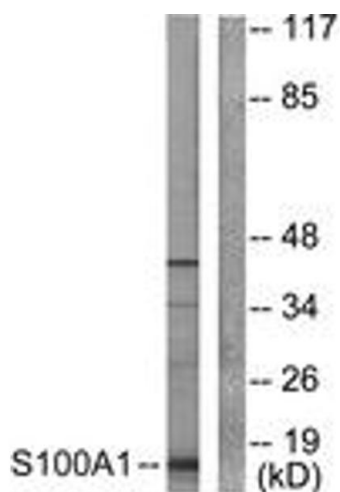
	NCBI Gene Symbol: S100A1
Molecular Weight:	10 kDa
Gene ID:	6271
OMIM:	176940
UniProt:	P23297
Pathways:	Regulation of Muscle Cell Differentiation , Toll-Like Receptors Cascades , S100 Proteins

Application Details

Application Notes:	WB: 1:500~1:1000 IHC: 1:50~1:100 IF: 1:100~1:500 ELISA: 1:20000
Comment:	Unigene-Number: Hs.515715 (NCBI Gene Symbol: S100A1)
Restrictions:	For Research Use only

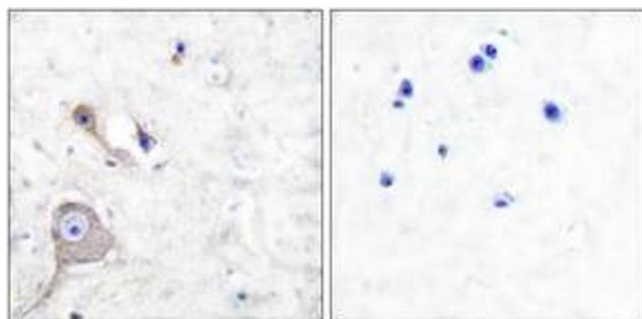
Handling

Format:	Liquid
Concentration:	1 mg/mL
Buffer:	phosphate buffered saline (without Mg ²⁺ and Ca ²⁺), pH 7.4, 150 mM NaCl, 0.02 % sodium azide and 50 % glycerol.
Preservative:	Sodium azide
Precaution of Use:	This product contains sodium azide: a POISONOUS AND HAZARDOUS SUBSTANCE which should be handled by trained staff only.
Storage:	-20 °C
Storage Comment:	Stable at -20°C for at least 1 year.
Expiry Date:	12 months



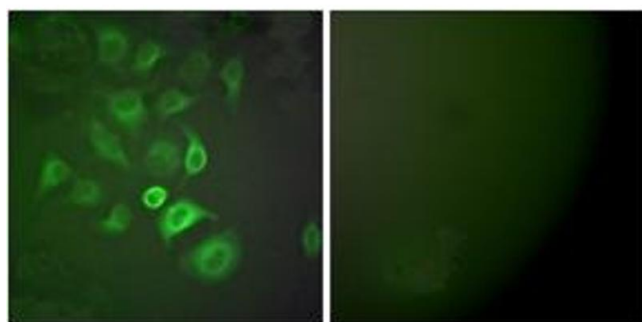
Western Blotting

Image 1. Western blot analysis of extracts from A549 cells, using S100 A1 Antibody. The lane on the right is treated with the synthesized peptide.



Immunohistochemistry

Image 2. Immunohistochemistry analysis of paraffin-embedded human brain tissue, using S100 A1 Antibody. The picture on the right is treated with the synthesized peptide.



Immunofluorescence

Image 3. Immunofluorescence analysis of A549 cells, using S100 A1 Antibody. The picture on the right is treated with the synthesized peptide.