

Datasheet for ABIN1533398  
**anti-SKP1 antibody (AA 41-90)**



[Go to Product page](#)

2 Images

## Overview

Quantity:	100 µL
Target:	SKP1
Binding Specificity:	AA 41-90
Reactivity:	Human, Mouse, Rat
Host:	Rabbit
Clonality:	Polyclonal
Conjugate:	This SKP1 antibody is un-conjugated
Application:	Western Blotting (WB), ELISA, Immunohistochemistry (IHC)

## Product Details

Immunogen:	The antiserum was produced against synthesized peptide derived from human SKP1A/p19.
Isotype:	IgG
Specificity:	SKP1A/p19 Antibody detects endogenous levels of total SKP1A/p19 protein.
Purification:	The antibody was purified from rabbit antiserum by affinity-chromatography using immunogen.
Purity:	> 95 %

## Target Details

Target:	SKP1
Abstract:	<a href="#">SKP1 Products</a>
Background:	Synonyms: EMC19, OCP-2, OCP-II, OCP2, RNA polymerase II elongation factor-like, RNA

## Target Details

---

polymerase II elongation factor-like OCP2, S-phase kinase-associated 1A, S-phase kinase-associated 1A (p19A), SIII, SKP1, TCEB1L, cyclin A/CDK2-associated p19, organ of Corti 2, p19  
NCBI Gene Symbol: SKP1

Molecular Weight: 18 kDa

Gene ID: 6500

OMIM: 601434

UniProt: [P63208](#)

Pathways: [Cell Division Cycle](#), [Hedgehog Signaling](#), [Mitotic G1-G1/S Phases](#)

## Application Details

---

Application Notes: WB: 1:500~1:1000 IHC: 1:50~1:100 ELISA: 1:1000

Comment: Unigene-Number: Hs.171626 (NCBI Gene Symbol: SKP1)

Restrictions: For Research Use only

## Handling

---

Format: Liquid

Concentration: 1 mg/mL

Buffer: phosphate buffered saline (without Mg<sup>2+</sup> and Ca<sup>2+</sup>), pH 7.4, 150 mM NaCl, 0.02 % sodium azide and 50 % glycerol.

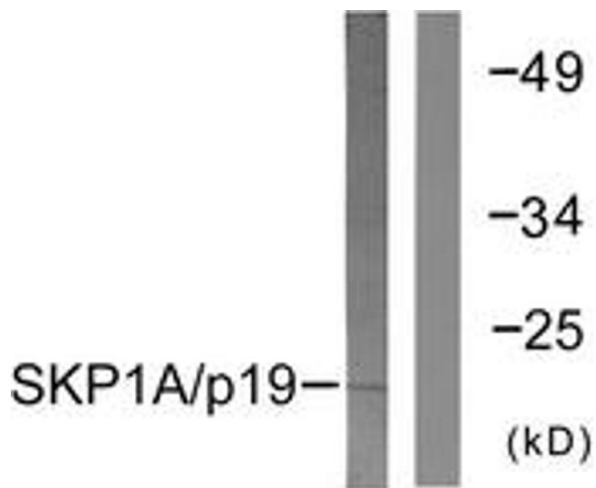
Preservative: Sodium azide

Precaution of Use: This product contains sodium azide: a POISONOUS AND HAZARDOUS SUBSTANCE which should be handled by trained staff only.

Storage: -20 °C

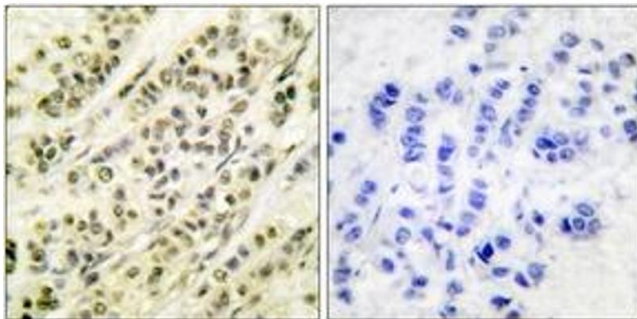
Storage Comment: Stable at -20°C for at least 1 year.

Expiry Date: 12 months



#### Western Blotting

**Image 1.** Western blot analysis of extracts from COS7 cells, using SKP1A/p19 Antibody. The lane on the right is treated with the synthesized peptide.



#### Immunohistochemistry

**Image 2.** Immunohistochemistry analysis of paraffin-embedded human breast carcinoma tissue, using SKP1A/p19 Antibody. The picture on the right is treated with the synthesized peptide.