

Datasheet for ABIN1533399  
**anti-SKP2 antibody (AA 366-415)**

## 3 Images

[Go to Product page](#)

## Overview

Quantity:	100 µg
Target:	SKP2
Binding Specificity:	AA 366-415
Reactivity:	Human
Host:	Rabbit
Clonality:	Polyclonal
Conjugate:	This SKP2 antibody is un-conjugated
Application:	Western Blotting (WB), Immunohistochemistry (IHC), ELISA, Immunofluorescence (IF)

## Product Details

Immunogen:	The antiserum was produced against synthesized peptide derived from human SKP2/p45.
Isotype:	IgG
Specificity:	SKP2/p45 Antibody detects endogenous levels of total SKP2/p45 protein.
Purification:	The antibody was purified from rabbit antiserum by affinity-chromatography using immunogen.
Purity:	> 95 %

## Target Details

Target:	SKP2
Alternative Name:	SKP2/p45 ( <a href="#">SKP2 Products</a> )
Background:	Synonyms: F-box protein Skp2, F-box/LRR-repeat protein 1, FBXL1, S-phase kinase-associated

## Target Details

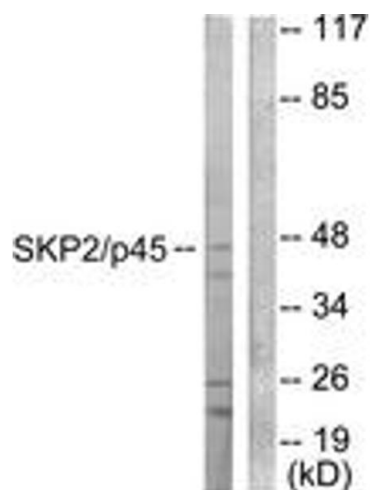
	protein 2, cyclin A/CDK2-associated protein p45, p45skp2 NCBI Gene Symbol: SKP2
Molecular Weight:	47 kDa
Gene ID:	6502
OMIM:	601436
UniProt:	<a href="#">Q13309</a>
Pathways:	<a href="#">Mitotic G1-G1/S Phases</a>

## Application Details

Application Notes:	WB: 1:500~1:1000 IHC: 1:50~1:100 IF: 1:100~1:500 ELISA: 1:20000
Comment:	Unigene-Number: Hs.23348 (NCBI Gene Symbol: SKP2)
Restrictions:	For Research Use only

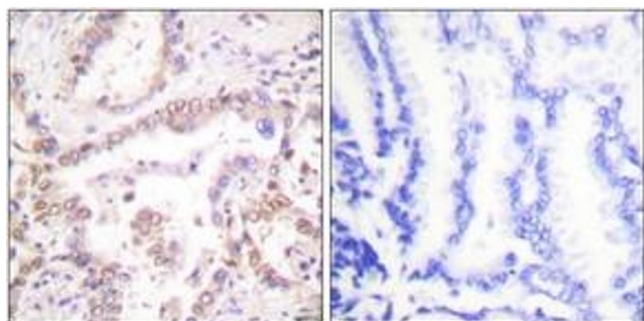
## Handling

Format:	Liquid
Concentration:	1 mg/mL
Buffer:	phosphate buffered saline (without Mg <sup>2+</sup> and Ca <sup>2+</sup> ), pH 7.4, 150 mM NaCl, 0.02 % sodium azide and 50 % glycerol.
Preservative:	Sodium azide
Precaution of Use:	This product contains sodium azide: a POISONOUS AND HAZARDOUS SUBSTANCE which should be handled by trained staff only.
Storage:	-20 °C
Storage Comment:	Stable at -20°C for at least 1 year.
Expiry Date:	12 months



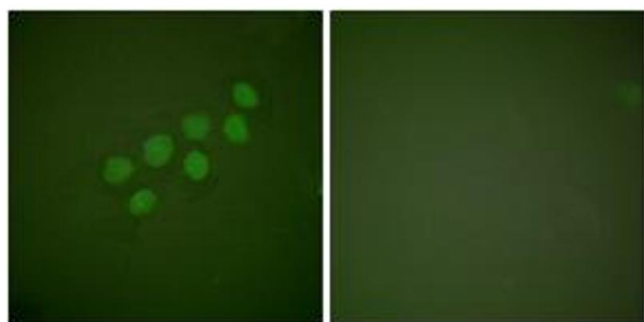
#### Western Blotting

**Image 1.** Western blot analysis of extracts from 293 cells, using SKP2/p45 Antibody. The lane on the right is treated with the synthesized peptide.



#### Immunohistochemistry

**Image 2.** Immunohistochemistry analysis of paraffin-embedded human lung carcinoma tissue, using SKP2/p45 Antibody. The picture on the right is treated with the synthesized peptide.



#### Immunofluorescence

**Image 3.** Immunofluorescence analysis of A549 cells, using SKP2/p45 Antibody. The picture on the right is treated with the synthesized peptide.