



[Go to Product page](#)

Datasheet for ABIN1533401

## anti-Sodium Channel antibody (AA 1466-1515)

### 2 Images

#### Overview

|                      |  |
|----------------------|--|
| Quantity:            | 100 µg   |
| Target:              | Sodium Channel   |
| Binding Specificity: | AA 1466-1515   |
| Reactivity:          | Human, Mouse, Rat  |
| Host:                | Rabbit   |
| Clonality:           | Polyclonal   |
| Conjugate:           | This Sodium Channel antibody is un-conjugated            |
| Application:         | Immunohistochemistry (IHC), ELISA, Western Blotting (WB) |

#### Product Details

|               |   |
|---------------|---|
| Immunogen:    | The antiserum was produced against synthesized peptide derived from human Sodium Channel.   |
| Isotype:      | IgG   |
| Specificity:  | Sodium Channel-pan Antibody detects endogenous levels of total Sodium Channel protein.      |
| Purification: | The antibody was purified from rabbit antiserum by affinity-chromatography using immunogen. |
| Purity:       | > 95 %  |

#### Target Details

|           |   |
|-----------|---|
| Target:   | Sodium Channel                          |
| Abstract: | <a href="#">Sodium Channel Products</a> |

## Target Details

---

|                   |  |
|-------------------|--|
| Background:       | Synonyms: CIN5, HH1, SCN5A, Sodium channel protein, cardiac muscle alpha-subunit<br>NCBI Gene Symbol: SCN2A  |
| Molecular Weight: | 227 kDa  |
| Gene ID:          | 6323, 6326, 6328   |
| OMIM:             | 182389   |
| UniProt:          | <a href="#">P35498</a> , <a href="#">Q99250</a> , <a href="#">Q9NY46</a> , <a href="#">P35499</a> , <a href="#">Q14524</a> , <a href="#">Q9UQD0</a> , <a href="#">Q15858</a> , <a href="#">Q9Y5Y9</a> , <a href="#">Q9UI33</a> |

## Application Details

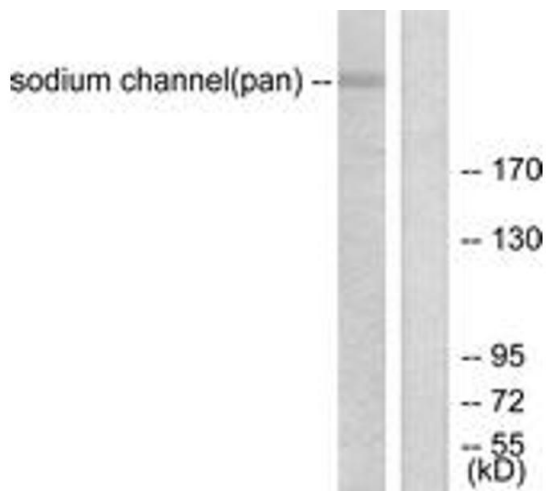
---

|                    |   |
|--------------------|---|
| Application Notes: | WB: 1:500~1:1000 IHC: 1:50~1:100 ELISA: 1:20000   |
| Comment:           | Unigene-Number: Hs.22654, Hs.93485, Hs.435274, Hs.46038, Hs.517898, Hs.710638,<br>Hs.439145, Hs.250443, Hs.591657 (NCBI Gene Symbol: SCN2A) |
| Restrictions:      | For Research Use only   |

## Handling

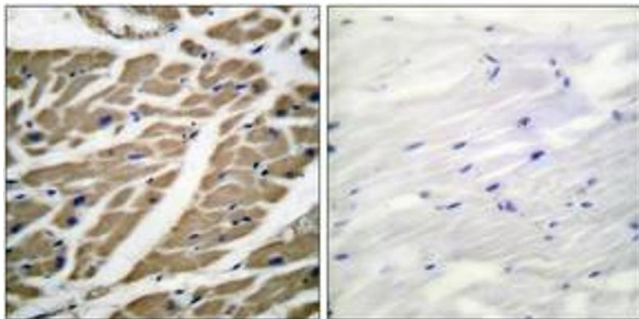
---

|                    |   |
|--------------------|---|
| Format:            | Liquid  |
| Concentration:     | 1 mg/mL   |
| Buffer:            | phosphate buffered saline (without Mg <sup>2+</sup> and Ca <sup>2+</sup> ), pH 7.4, 150 mM NaCl, 0.02 % sodium azide and 50 % glycerol. |
| Preservative:      | Sodium azide  |
| Precaution of Use: | This product contains sodium azide: a POISONOUS AND HAZARDOUS SUBSTANCE which should be handled by trained staff only.                  |
| Storage:           | -20 °C  |
| Storage Comment:   | Stable at -20°C for at least 1 year.  |
| Expiry Date:       | 12 months   |



### Western Blotting

**Image 1.** Western blot analysis of extracts from HuvEc cells, using Sodium Channel-pan Antibody. The lane on the right is treated with the synthesized peptide.



### Immunohistochemistry

**Image 2.** Immunohistochemistry analysis of paraffin-embedded human heart tissue, using Sodium Channel-pan Antibody. The picture on the right is treated with the synthesized peptide.