

Datasheet for ABIN1533403
anti-CSTA antibody (AA 49-98)[Go to Product page](#)

3 Images

Overview

Quantity:	100 µg
Target:	CSTA
Binding Specificity:	AA 49-98
Reactivity:	Human
Host:	Rabbit
Clonality:	Polyclonal
Conjugate:	This CSTA antibody is un-conjugated
Application:	Western Blotting (WB), Immunohistochemistry (IHC), ELISA, Immunofluorescence (IF)

Product Details

Immunogen:	The antiserum was produced against synthesized peptide derived from human Stefin A.
Isotype:	IgG
Specificity:	Stefin A Antibody detects endogenous levels of total Stefin A protein.
Purification:	The antibody was purified from rabbit antiserum by affinity-chromatography using immunogen.
Purity:	> 95 %

Target Details

Target:	CSTA
Alternative Name:	Stefin A (CSTA Products)
Background:	Synonyms: STF1, STFA, cystatin A (stefin A), cystatin AS

Target Details

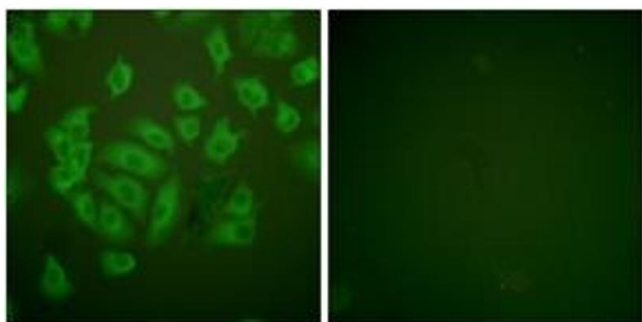
	NCBI Gene Symbol: CSTA
Molecular Weight:	11 kDa
Gene ID:	1475
OMIM:	184600
UniProt:	P01040
Pathways:	Response to Water Deprivation

Application Details

Application Notes:	WB: 1:500~1:1000 IHC: 1:50~1:100 IF: 1:100~1:500 ELISA: 1:5000
Comment:	Unigene-Number: Hs.518198 (NCBI Gene Symbol: CSTA)
Restrictions:	For Research Use only

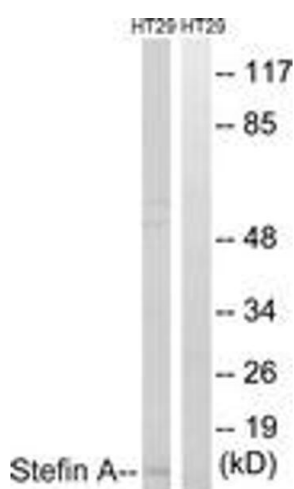
Handling

Format:	Liquid
Concentration:	1 mg/mL
Buffer:	phosphate buffered saline (without Mg ²⁺ and Ca ²⁺), pH 7.4, 150 mM NaCl, 0.02 % sodium azide and 50 % glycerol.
Preservative:	Sodium azide
Precaution of Use:	This product contains sodium azide: a POISONOUS AND HAZARDOUS SUBSTANCE which should be handled by trained staff only.
Storage:	-20 °C
Storage Comment:	Stable at -20°C for at least 1 year.
Expiry Date:	12 months



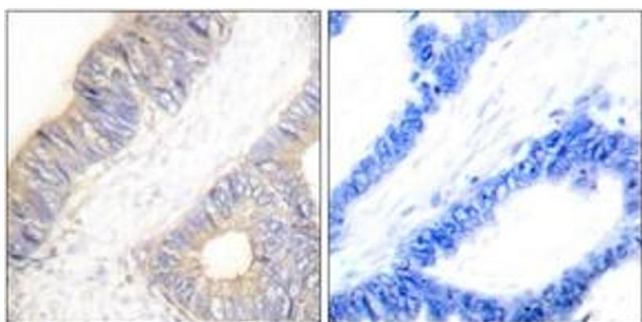
Immunofluorescence

Image 1. Immunofluorescence analysis of A549 cells, using Stefin A Antibody. The picture on the right is treated with the synthesized peptide.



Western Blotting

Image 2. Western blot analysis of extracts from HT29 cells, using Stefin A Antibody. The lane on the right is treated with the synthesized peptide.



Immunohistochemistry

Image 3. Immunohistochemistry analysis of paraffin-embedded human colon carcinoma tissue, using Stefin A Antibody. The picture on the right is treated with the synthesized peptide.