



[Go to Product page](#)

Datasheet for ABIN1533407  
**anti-SNCG antibody (AA 78-127)**

2 Images

Overview

Quantity:	100 µg
Target:	SNCG
Binding Specificity:	AA 78-127
Reactivity:	Human
Host:	Rabbit
Clonality:	Polyclonal
Conjugate:	This SNCG antibody is un-conjugated
Application:	Western Blotting (WB), Immunohistochemistry (IHC), ELISA

Product Details

Immunogen:	The antiserum was produced against synthesized peptide derived from human Synuclein gamma.
Isotype:	IgG
Specificity:	Synuclein gamma Antibody detects endogenous levels of total Synuclein gamma protein.
Purification:	The antibody was purified from rabbit antiserum by affinity-chromatography using immunogen.
Purity:	> 95 %

Target Details

Target:	SNCG
Alternative Name:	Synuclein gamma ( <a href="#">SNCG Products</a> )

## Target Details

---

Background:	Synonyms: BCSG1, PERSYN, BREAST CANCER-SPECIFIC GENE 1 NCBI Gene Symbol: SNCG
Molecular Weight:	13 kDa
Gene ID:	6623
OMIM:	602998
UniProt:	<a href="#">O76070</a>

## Application Details

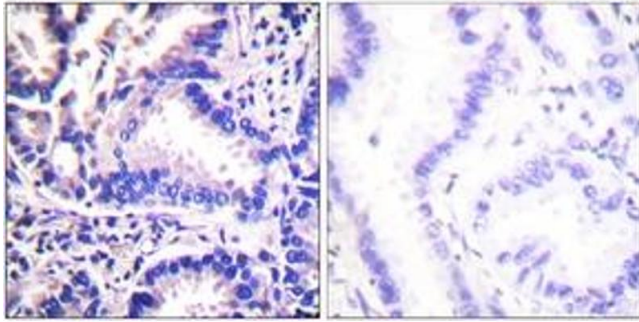
---

Application Notes:	WB: 1:500~1:1000 IHC: 1:50~1:100 ELISA: 1:10000
Comment:	Unigene-Number: Hs.349470 (NCBI Gene Symbol: SNCG)
Restrictions:	For Research Use only

## Handling

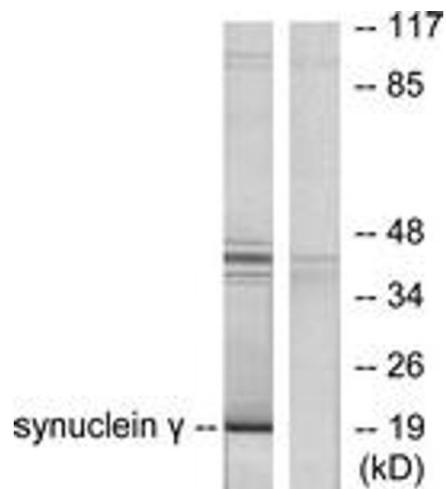
---

Format:	Liquid
Concentration:	1 mg/mL
Buffer:	phosphate buffered saline (without Mg <sup>2+</sup> and Ca <sup>2+</sup> ), pH 7.4, 150 mM NaCl, 0.02 % sodium azide and 50 % glycerol.
Preservative:	Sodium azide
Precaution of Use:	This product contains sodium azide: a POISONOUS AND HAZARDOUS SUBSTANCE which should be handled by trained staff only.
Storage:	-20 °C
Storage Comment:	Stable at -20°C for at least 1 year.
Expiry Date:	12 months



### Immunohistochemistry

**Image 1.** Immunohistochemistry analysis of paraffin-embedded human lung carcinoma tissue, using Synuclein gamma Antibody. The picture on the right is treated with the synthesized peptide.



### Western Blotting

**Image 2.** Western blot analysis of extracts from HT29 cells, using Synuclein gamma Antibody. The lane on the right is treated with the synthesized peptide.