

Datasheet for ABIN1533408
anti-beta Synuclein antibody (AA 85-134)

3 Images

[Go to Product page](#)

Overview

Quantity:	100 µg
Target:	beta Synuclein (SNCB)
Binding Specificity:	AA 85-134
Reactivity:	Human, Mouse, Rat
Host:	Rabbit
Clonality:	Polyclonal
Conjugate:	This beta Synuclein antibody is un-conjugated
Application:	Western Blotting (WB), ELISA, Immunohistochemistry (IHC), Immunofluorescence (IF)

Product Details

Immunogen:	The antiserum was produced against synthesized peptide derived from human Synuclein beta.
Isotype:	IgG
Specificity:	Synuclein beta Antibody detects endogenous levels of total Synuclein beta protein.
Purification:	The antibody was purified from rabbit antiserum by affinity-chromatography using immunogen.
Purity:	> 95 %

Target Details

Target:	beta Synuclein (SNCB)
Alternative Name:	Synuclein beta (SNCB Products)
Background:	Synonyms: SYUB, beta-synuclein

Target Details

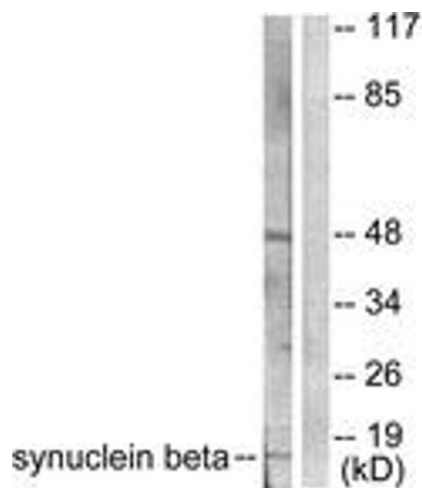
	NCBI Gene Symbol: SNCB
Molecular Weight:	14 kDa
Gene ID:	6620
OMIM:	602569
UniProt:	Q16143

Application Details

Application Notes:	WB: 1:500~1:1000 IHC: 1:50~1:100 IF: 1:100~1:500 ELISA: 1:5000
Comment:	Unigene-Number: Hs.90297 (NCBI Gene Symbol: SNCB)
Restrictions:	For Research Use only

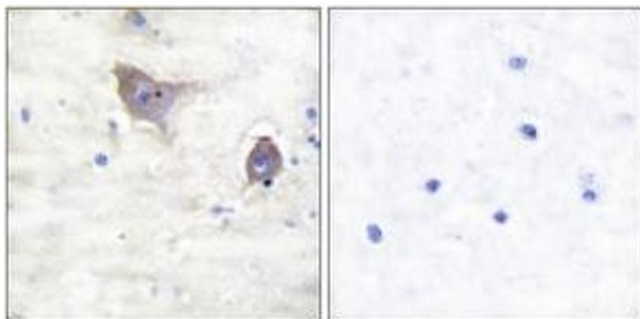
Handling

Format:	Liquid
Concentration:	1 mg/mL
Buffer:	phosphate buffered saline (without Mg ²⁺ and Ca ²⁺), pH 7.4, 150 mM NaCl, 0.02 % sodium azide and 50 % glycerol.
Preservative:	Sodium azide
Precaution of Use:	This product contains sodium azide: a POISONOUS AND HAZARDOUS SUBSTANCE which should be handled by trained staff only.
Storage:	-20 °C
Storage Comment:	Stable at -20°C for at least 1 year.
Expiry Date:	12 months



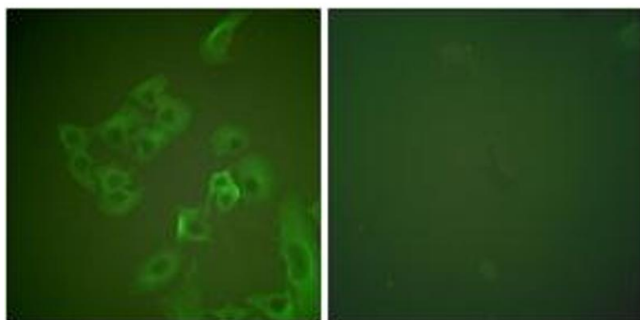
Western Blotting

Image 1. Western blot analysis of extracts from HeLa cells, using Synuclein beta Antibody. The lane on the right is treated with the synthesized peptide.



Immunohistochemistry

Image 2. Immunohistochemistry analysis of paraffin-embedded human brain tissue, using Synuclein beta Antibody. The picture on the right is treated with the synthesized peptide.



Immunofluorescence

Image 3. Immunofluorescence analysis of A549 cells, using Synuclein beta Antibody. The picture on the right is treated with the synthesized peptide.