



[Go to Product page](#)

Datasheet for ABIN1533409  
**anti-Synuclein antibody (AA 15-64)**

2 Images

### Overview

Quantity:	100 µg
Target:	Synuclein (SYU)
Binding Specificity:	AA 15-64
Reactivity:	Human, Mouse, Rat
Host:	Rabbit
Clonality:	Polyclonal
Conjugate:	This Synuclein antibody is un-conjugated
Application:	Western Blotting (WB), Immunohistochemistry (IHC), ELISA

### Product Details

Immunogen:	The antiserum was produced against synthesized peptide derived from human Synuclein.
Isotype:	IgG
Specificity:	Synuclein-pan Antibody detects endogenous levels of total Synuclein protein.
Purification:	The antibody was purified from rabbit antiserum by affinity-chromatography using immunogen.
Purity:	> 95 %

### Target Details

Target:	Synuclein (SYU)
Alternative Name:	Synuclein ( <a href="#">SYU Products</a> )
Background:	Synonyms: Alpha-synuclein, Non-A beta component of AD amyloid, Non-A4 component of

## Target Details

---

amyloid precursor, NACP, SNCA, NACP, PARK1

NCBI Gene Symbol: SNCA

Molecular Weight: 14 kDa

Gene ID: 6622

OMIM: 127750

UniProt: [P37840](#)

## Application Details

---

Application Notes: WB: 1:500~1:1000 IHC: 1:50~1:100 ELISA: 1:5000

Comment: Unigene-Number: Hs.21374 (NCBI Gene Symbol: SNCA)

Restrictions: For Research Use only

## Handling

---

Format: Liquid

Concentration: 1 mg/mL

Buffer: phosphate buffered saline (without Mg<sup>2+</sup> and Ca<sup>2+</sup>), pH 7.4, 150 mM NaCl, 0.02 % sodium azide and 50 % glycerol.

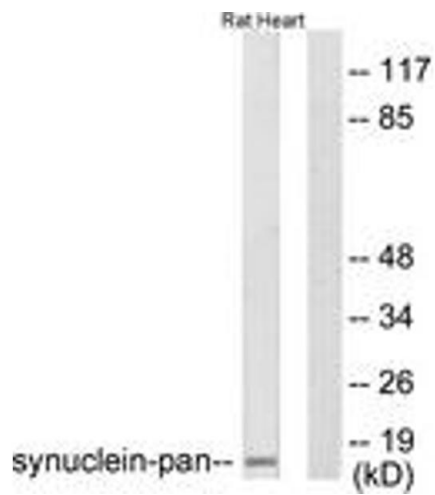
Preservative: Sodium azide

Precaution of Use: This product contains sodium azide: a POISONOUS AND HAZARDOUS SUBSTANCE which should be handled by trained staff only.

Storage: -20 °C

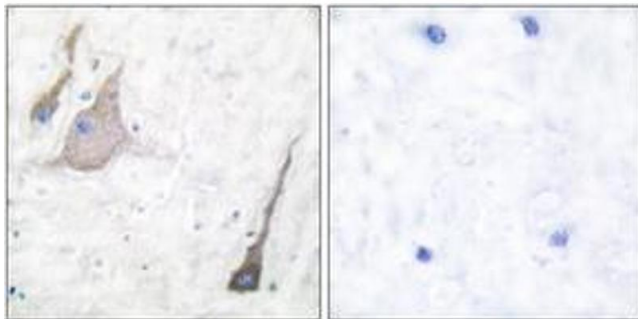
Storage Comment: Stable at -20°C for at least 1 year.

Expiry Date: 12 months



### Western Blotting

**Image 1.** Western blot analysis of extracts from rat heart cells, using Synuclein-pan Antibody. The lane on the right is treated with the synthesized peptide.



### Immunohistochemistry

**Image 2.** Immunohistochemistry analysis of paraffin-embedded human brain tissue, using Synuclein-pan Antibody. The picture on the right is treated with the synthesized peptide.