

Datasheet for ABIN1533418
anti-THRB antibody (AA 11-60)



[Go to Product page](#)

2 Images

Overview

Quantity:	100 µL
Target:	THRB
Binding Specificity:	AA 11-60
Reactivity:	Human, Mouse, Rat
Host:	Rabbit
Clonality:	Polyclonal
Conjugate:	This THRB antibody is un-conjugated
Application:	Western Blotting (WB), ELISA, Immunohistochemistry (IHC)

Product Details

Immunogen:	The antiserum was produced against synthesized peptide derived from human Thyroid Hormone Receptor beta.
Isotype:	IgG
Specificity:	Thyroid Hormone Receptor beta Antibody detects endogenous levels of total Thyroid Hormone Receptor beta protein.
Purification:	The antibody was purified from rabbit antiserum by affinity-chromatography using immunogen.
Purity:	> 95 %

Target Details

Target:	THRB
---------	------

Target Details

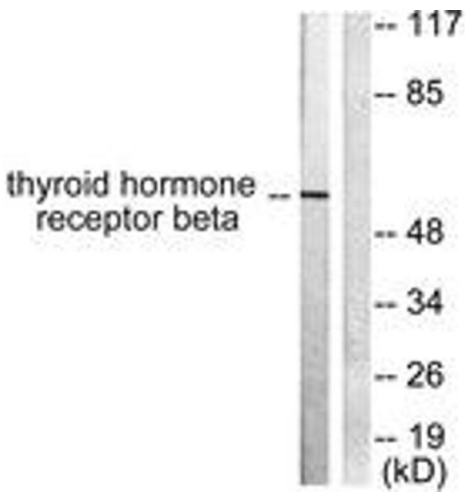
Alternative Name:	Thyroid Hormone Receptor beta (THRB Products)
Background:	Synonyms: C-ERBA-BETA, ERBA2, NR1A2, THB1, THR1 NCBI Gene Symbol: THRB
Molecular Weight:	52 kDa
Gene ID:	7068
OMIM:	145650
UniProt:	P10828
Pathways:	Nuclear Receptor Transcription Pathway , Steroid Hormone Mediated Signaling Pathway , Sensory Perception of Sound

Application Details

Application Notes:	WB: 1:500~1:1000 IHC: 1:50~1:100 ELISA: 1:5000
Comment:	Unigene-Number: Hs.187861 (NCBI Gene Symbol: THRB)
Restrictions:	For Research Use only

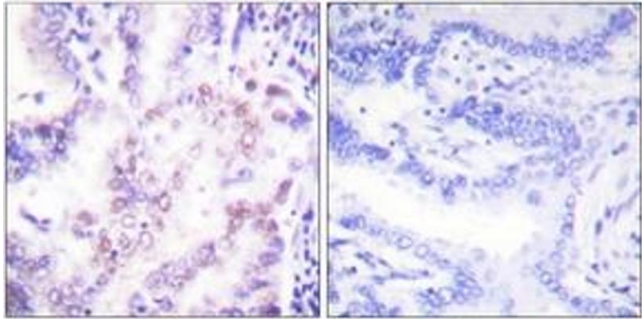
Handling

Format:	Liquid
Concentration:	1 mg/mL
Buffer:	phosphate buffered saline (without Mg2+ and Ca2+), pH 7.4, 150 mM NaCl, 0.02 % sodium azide and 50 % glycerol.
Preservative:	Sodium azide
Precaution of Use:	This product contains sodium azide: a POISONOUS AND HAZARDOUS SUBSTANCE which should be handled by trained staff only.
Storage:	-20 °C
Storage Comment:	Stable at -20°C for at least 1 year.
Expiry Date:	12 months



Western Blotting

Image 1. Western blot analysis of extracts from LOVO cells, using Thyroid Hormone Receptor beta Antibody. The lane on the right is treated with the synthesized peptide.



Immunohistochemistry

Image 2. Immunohistochemistry analysis of paraffin-embedded human lung carcinoma tissue, using Thyroid Hormone Receptor beta Antibody. The picture on the right is treated with the synthesized peptide.