

Datasheet for ABIN1533423  
**anti-SAE1 antibody (AA 221-270)**



[Go to Product page](#)

2 Images

## Overview

Quantity:	100 µL
Target:	SAE1
Binding Specificity:	AA 221-270
Reactivity:	Human, Mouse, Rat
Host:	Rabbit
Clonality:	Polyclonal
Conjugate:	This SAE1 antibody is un-conjugated
Application:	Western Blotting (WB), ELISA, Immunofluorescence (IF)

## Product Details

Immunogen:	The antiserum was produced against synthesized peptide derived from human AOS1.
Isotype:	IgG
Specificity:	AOS1 Antibody detects endogenous levels of total AOS1 protein.
Purification:	The antibody was purified from rabbit antiserum by affinity-chromatography using immunogen.
Purity:	> 95 %

## Target Details

Target:	SAE1
Alternative Name:	AOS1 ( <a href="#">SAE1 Products</a> )
Background:	Synonyms: SUMO-activating enzyme subunit 1, Ubiquitin-like 1-activating enzyme E1A, SAE1,

## Target Details

AOS1, SUA1, UBLE1A  
NCBI Gene Symbol: SAE1

Molecular Weight: 38 kDa

Gene ID: 10055

OMIM: 613294

UniProt: [Q9UBE0](#)

## Application Details

Application Notes: WB: 1:500~1:1000 IF: 1:100~1:500 ELISA: 1:20000

Comment: Unigene-Number: Hs.515500 (NCBI Gene Symbol: SAE1)

Restrictions: For Research Use only

## Handling

Format: Liquid

Concentration: 1 mg/mL

Buffer: phosphate buffered saline (without Mg<sup>2+</sup> and Ca<sup>2+</sup>), pH 7.4, 150 mM NaCl, 0.02 % sodium azide and 50 % glycerol.

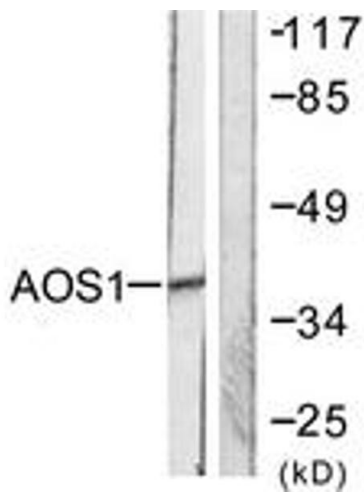
Preservative: Sodium azide

Precaution of Use: This product contains sodium azide: a POISONOUS AND HAZARDOUS SUBSTANCE which should be handled by trained staff only.

Storage: -20 °C

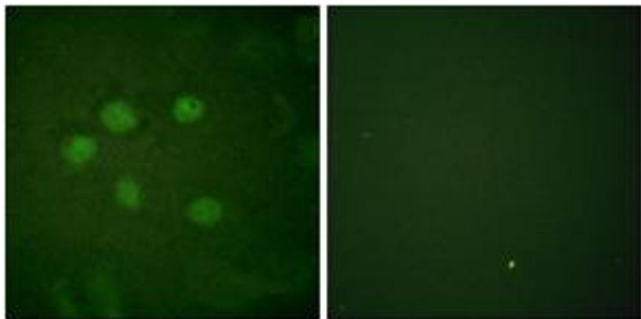
Storage Comment: Stable at -20°C for at least 1 year.

Expiry Date: 12 months



#### Western Blotting

**Image 1.** Western blot analysis of extracts from 293 cells, using AOS1 Antibody. The lane on the right is treated with the synthesized peptide.



#### Immunofluorescence

**Image 2.** Immunofluorescence analysis of HuvEc cells, using AOS1 Antibody. The picture on the right is treated with the synthesized peptide.