

Datasheet for ABIN1533425  
**anti-CDK7 antibody (AA 291-340)**



[Go to Product page](#)

2 Images

## Overview

Quantity:	100 µL
Target:	CDK7
Binding Specificity:	AA 291-340
Reactivity:	Human, Mouse
Host:	Rabbit
Clonality:	Polyclonal
Conjugate:	This CDK7 antibody is un-conjugated
Application:	Western Blotting (WB), Immunohistochemistry (IHC), ELISA

## Product Details

Immunogen:	The antiserum was produced against synthesized peptide derived from human CDK7.
Isotype:	IgG
Specificity:	CDK7 Antibody detects endogenous levels of total CDK7 protein.
Purification:	The antibody was purified from rabbit antiserum by affinity-chromatography using immunogen.
Purity:	> 95 %

## Target Details

Target:	CDK7
Alternative Name:	CDK7 ( <a href="#">CDK7 Products</a> )
Background:	Synonyms: 39 kDa protein kinase, CAK, CAK1, CDK-activating kinase, CDKN7, CR4 protein

### Target Details

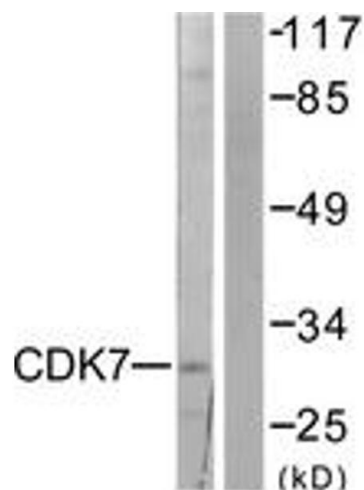
	kinase, CRK4, Cell division protein kinase 7, MO15, MPK-7, P39 Mo15, Protein-tyrosine kinase MPK-7, STK1, TFIIH basal complex kinase subunit, kinase Cdk7 NCBI Gene Symbol: CDK7
Molecular Weight:	39 kDa
Gene ID:	1022
OMIM:	601955
UniProt:	<a href="#">P50613</a>
Pathways:	<a href="#">Cell Division Cycle</a> , <a href="#">DNA Damage Repair</a> , <a href="#">Intracellular Steroid Hormone Receptor Signaling Pathway</a> , <a href="#">Mitotic G1-G1/S Phases</a> , <a href="#">M Phase</a>

### Application Details

Application Notes:	WB: 1:500~1:1000 IHC: 1:50~1:100 ELISA: 1:20000
Comment:	Unigene-Number: Hs.184298 (NCBI Gene Symbol: CDK7)
Restrictions:	For Research Use only

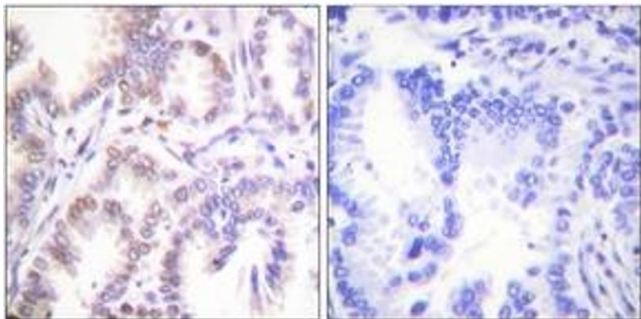
### Handling

Format:	Liquid
Concentration:	1 mg/mL
Buffer:	phosphate buffered saline (without Mg2+ and Ca2+), pH 7.4, 150 mM NaCl, 0.02 % sodium azide and 50 % glycerol.
Preservative:	Sodium azide
Precaution of Use:	This product contains sodium azide: a POISONOUS AND HAZARDOUS SUBSTANCE which should be handled by trained staff only.
Storage:	-20 °C
Storage Comment:	Stable at -20°C for at least 1 year.
Expiry Date:	12 months



Western Blotting

**Image 1.** Western blot analysis of extracts from 293 cells, using CDK7 Antibody. The lane on the right is treated with the synthesized peptide.



Immunohistochemistry

**Image 2.** Immunohistochemistry analysis of paraffin-embedded human lung carcinoma tissue, using CDK7 Antibody. The picture on the right is treated with the synthesized peptide.