



[Go to Product page](#)

Datasheet for ABIN1533428  
**anti-HAT antibody (AA 331-380)**

1 Image

Overview

Quantity:	100 µL
Target:	HAT
Binding Specificity:	AA 331-380
Reactivity:	Human, Mouse, Rat
Host:	Rabbit
Clonality:	Polyclonal
Conjugate:	This HAT antibody is un-conjugated
Application:	ELISA, Western Blotting (WB)

Product Details

Immunogen:	The antiserum was produced against synthesized peptide derived from human HAT.
Isotype:	IgG
Specificity:	HAT Antibody detects endogenous levels of total HAT protein.
Purification:	The antibody was purified from rabbit antiserum by affinity-chromatography using immunogen.
Purity:	> 95 %

Target Details

Target:	HAT
Alternative Name:	HAT ( <a href="#">HAT Products</a> )
Background:	Synonyms: histone acetyltransferase 1, histone acetyltransferase type B catalytic, KAT1

## Target Details

---

NCBI Gene Symbol: HAT1

Molecular Weight: 49 kDa

Gene ID: 8520

OMIM: 603053

UniProt: [O14929](#)

Pathways: [Positive Regulation of Peptide Hormone Secretion, Regulation of Carbohydrate Metabolic Process](#)

## Application Details

---

Application Notes: WB: 1:500~1:1000 ELISA: 1:5000

Comment: Unigene-Number: Hs.632532 (NCBI Gene Symbol: HAT1)

Restrictions: For Research Use only

## Handling

---

Format: Liquid

Concentration: 1 mg/mL

Buffer: phosphate buffered saline (without Mg<sup>2+</sup> and Ca<sup>2+</sup>), pH 7.4, 150 mM NaCl, 0.02 % sodium azide and 50 % glycerol.

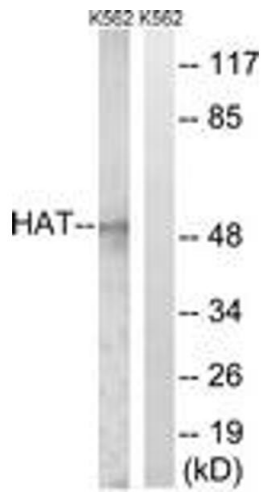
Preservative: Sodium azide

Precaution of Use: This product contains sodium azide: a POISONOUS AND HAZARDOUS SUBSTANCE which should be handled by trained staff only.

Storage: -20 °C

Storage Comment: Stable at -20°C for at least 1 year.

Expiry Date: 12 months



### Western Blotting

**Image 1.** Western blot analysis of extracts from K562 cells, using HAT Antibody. The lane on the right is treated with the synthesized peptide.