

Datasheet for ABIN1533429

**anti-NCOR1 antibody (AA 51-100)**[Go to Product page](#)**2** Images

## Overview

Quantity:	100 µg
Target:	NCOR1
Binding Specificity:	AA 51-100
Reactivity:	Human, Mouse
Host:	Rabbit
Clonality:	Polyclonal
Conjugate:	This NCOR1 antibody is un-conjugated
Application:	Western Blotting (WB), ELISA, Immunohistochemistry (IHC)

## Product Details

Immunogen:	The antiserum was produced against synthesized peptide derived from human NCoR1.
Isotype:	IgG
Specificity:	NCoR1 Antibody detects endogenous levels of total NCoR1 protein.
Purification:	The antibody was purified from rabbit antiserum by affinity-chromatography using immunogen.
Purity:	> 95 %

## Target Details

Target:	NCOR1
Alternative Name:	NCoR1 ( <a href="#">NCOR1 Products</a> )
Background:	Synonyms: Nuclear receptor corepressor 1, N-CoR1, N-CoR, NCOR1, KIAA1047

## Target Details

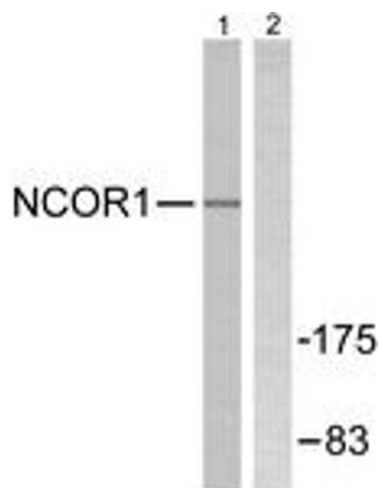
	NCBI Gene Symbol: NCOR1
Molecular Weight:	270 kDa
Gene ID:	9611
OMIM:	600849
UniProt:	<a href="#">O75376</a>
Pathways:	<a href="#">Nuclear Hormone Receptor Binding</a> , <a href="#">Chromatin Binding</a> , <a href="#">Regulation of Lipid Metabolism by PPARalpha</a> , <a href="#">Regulation of Carbohydrate Metabolic Process</a>

## Application Details

Application Notes:	WB: 1:500~1:1000 IHC: 1:50~1:100 ELISA: 1:20000
Comment:	Unigene-Number: Hs.462323 (NCBI Gene Symbol: NCOR1)
Restrictions:	For Research Use only

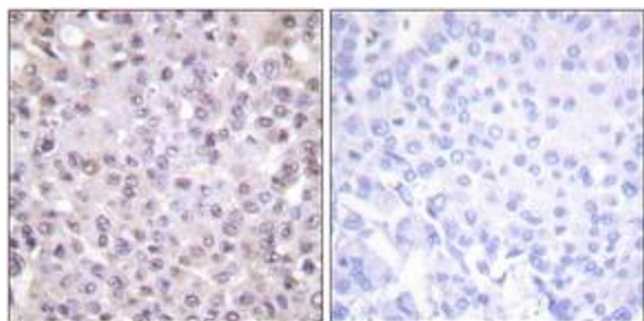
## Handling

Format:	Liquid
Concentration:	1 mg/mL
Buffer:	phosphate buffered saline (without Mg <sup>2+</sup> and Ca <sup>2+</sup> ), pH 7.4, 150 mM NaCl, 0.02 % sodium azide and 50 % glycerol.
Preservative:	Sodium azide
Precaution of Use:	This product contains sodium azide: a POISONOUS AND HAZARDOUS SUBSTANCE which should be handled by trained staff only.
Storage:	-20 °C
Storage Comment:	Stable at -20°C for at least 1 year.
Expiry Date:	12 months



#### Western Blotting

**Image 1.** Western blot analysis of extracts from MDA-MB-435 cells, using NCoR1 Antibody. The lane on the right is treated with the synthesized peptide.



#### Immunohistochemistry

**Image 2.** Immunohistochemistry analysis of paraffin-embedded human breast carcinoma tissue, using NCoR1 Antibody. The picture on the right is treated with the synthesized peptide.