

Datasheet for ABIN1533431
anti-NUB1 antibody (AA 566-615)[Go to Product page](#)

2 Images

Overview

Quantity:	100 µg
Target:	NUB1
Binding Specificity:	AA 566-615
Reactivity:	Human, Mouse
Host:	Rabbit
Clonality:	Polyclonal
Conjugate:	This NUB1 antibody is un-conjugated
Application:	Western Blotting (WB), Immunohistochemistry (IHC), ELISA

Product Details

Immunogen:	The antiserum was produced against synthesized peptide derived from human NYREN18.
Isotype:	IgG
Specificity:	NYREN18 Antibody detects endogenous levels of total NYREN18 protein.
Purification:	The antibody was purified from rabbit antiserum by affinity-chromatography using immunogen.
Purity:	> 95 %

Target Details

Target:	NUB1
Alternative Name:	NYREN18 (NUB1 Products)
Background:	Synonyms: NEDD8 µLtimebuster 1, Negative regulator of ubiquitin-like proteins 1, Renal

Target Details

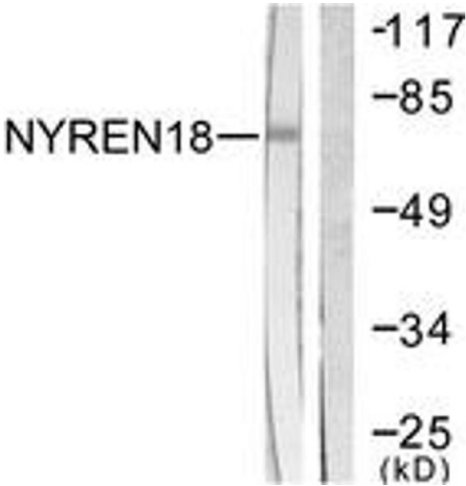
	carcinoma antigen NY-REN-18, NUB1, NYREN18 NCBI Gene Symbol: NUB1
Molecular Weight:	70 kDa
Gene ID:	51667
OMIM:	607981
UniProt:	Q9Y5A7

Application Details

Application Notes:	WB: 1:500~1:1000 IHC: 1:50~1:100 ELISA: 1:5000
Comment:	Unigene-Number: Hs.647082, Hs.662237 (NCBI Gene Symbol: NUB1)
Restrictions:	For Research Use only

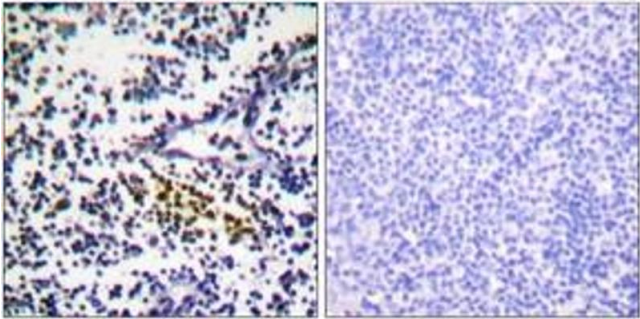
Handling

Format:	Liquid
Concentration:	1 mg/mL
Buffer:	phosphate buffered saline (without Mg ²⁺ and Ca ²⁺), pH 7.4, 150 mM NaCl, 0.02 % sodium azide and 50 % glycerol.
Preservative:	Sodium azide
Precaution of Use:	This product contains sodium azide: a POISONOUS AND HAZARDOUS SUBSTANCE which should be handled by trained staff only.
Storage:	-20 °C
Storage Comment:	Stable at -20°C for at least 1 year.
Expiry Date:	12 months



Western Blotting

Image 1. Western blot analysis of extracts from COS7 cells, using NYREN18 Antibody. The lane on the right is treated with the synthesized peptide.



Immunohistochemistry

Image 2. Immunohistochemistry analysis of paraffin-embedded human tonsil tissue, using NYREN18 Antibody. The picture on the right is treated with the synthesized peptide.