



[Go to Product page](#)

Datasheet for ABIN1533434
anti-PIAS3 antibody (AA 10-59)

2 Images

Overview

Quantity:	100 µL
Target:	PIAS3
Binding Specificity:	AA 10-59
Reactivity:	Human, Rat, Mouse
Host:	Rabbit
Clonality:	Polyclonal
Conjugate:	This PIAS3 antibody is un-conjugated
Application:	Western Blotting (WB), Immunohistochemistry (IHC), ELISA

Product Details

Immunogen:	The antiserum was produced against synthesized peptide derived from human PIAS3.
Isotype:	IgG
Specificity:	PIAS3 Antibody detects endogenous levels of total PIAS3 protein.
Purification:	The antibody was purified from rabbit antiserum by affinity-chromatography using immunogen.
Purity:	> 95 %

Target Details

Target:	PIAS3
Alternative Name:	PIAS3 (PIAS3 Products)
Background:	Synonyms: E3 SUMO-protein ligase PIAS3, Protein inhibitor of activated STAT protein 3

Target Details

NCBI Gene Symbol: PIAS3

Molecular Weight: 68 kDa

Gene ID: 10401

OMIM: 605987

UniProt: [Q9Y6X2](#)

Pathways: [JAK-STAT Signaling](#)

Application Details

Application Notes: WB: 1:500~1:1000 IHC: 1:50~1:100 ELISA: 1:10000

Comment: Unigene-Number: Hs.435761 (NCBI Gene Symbol: PIAS3)

Restrictions: For Research Use only

Handling

Format: Liquid

Concentration: 1 mg/mL

Buffer: phosphate buffered saline (without Mg²⁺ and Ca²⁺), pH 7.4, 150 mM NaCl, 0.02 % sodium azide and 50 % glycerol.

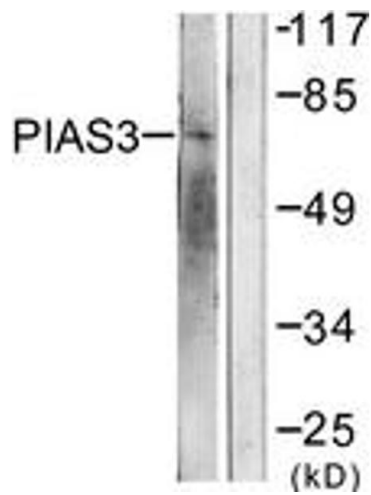
Preservative: Sodium azide

Precaution of Use: This product contains sodium azide: a POISONOUS AND HAZARDOUS SUBSTANCE which should be handled by trained staff only.

Storage: -20 °C

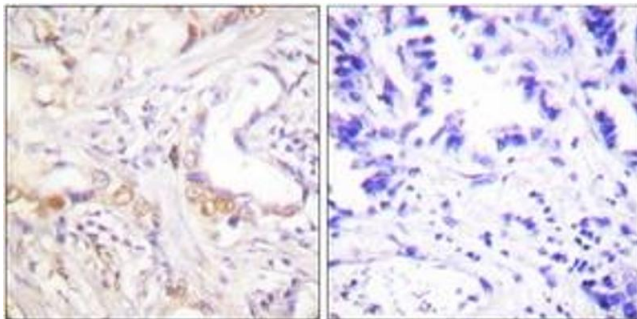
Storage Comment: Stable at -20°C for at least 1 year.

Expiry Date: 12 months



Western Blotting

Image 1. Western blot analysis of extracts from 293 cells, treated with UV 5', using PIAS3 Antibody. The lane on the right is treated with the synthesized peptide.



Immunohistochemistry

Image 2. Immunohistochemistry analysis of paraffin-embedded human lung carcinoma tissue, using PIAS3 Antibody. The picture on the right is treated with the synthesized peptide.